

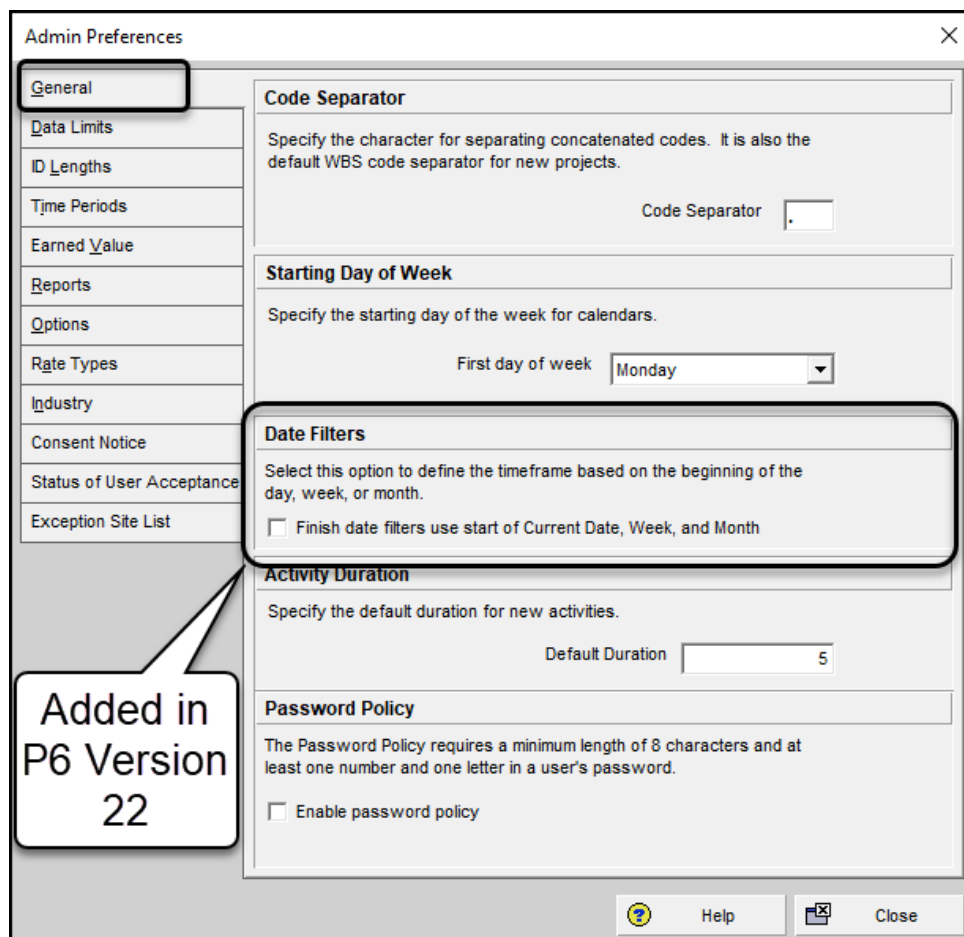
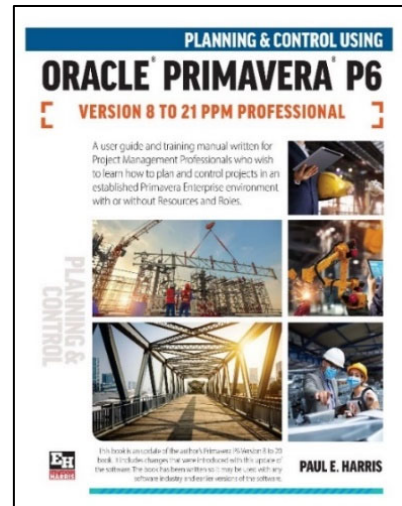
# Oracle Primavera P6 Version 22 Finish Date Filter Definition Update

Oracle Primavera releases new updates most months, and this paper outlines the changes made to the way the Finish Date Filter operates.

Readers may find the following Oracle documents which include the upgrade information. The P6 Professional 21.12 - 22.12 Release Feature Overview document downloaded from:

- [https://docs.oracle.com/cd/E64687\\_01/EPPM/EPPM\\_CFO.html](https://docs.oracle.com/cd/E64687_01/EPPM/EPPM_CFO.html)
- P6 Version 22 documentation downloaded from here:  
[https://docs.oracle.com/cd/F51303\\_01/index.htm](https://docs.oracle.com/cd/F51303_01/index.htm)

The **Admin, Admin Preferences, General** tab has a new **Data Filters** option:



The screenshot shows the 'Admin Preferences' dialog box with the 'General' tab selected. The 'Date Filters' section is highlighted with a callout box that says 'Added in P6 Version 22'. The 'Date Filters' section contains the following text and controls:

**Date Filters**  
Select this option to define the timeframe based on the beginning of the day, week, or month.  
 Finish date filters use start of Current Date, Week, and Month

**Code Separator**  
Specify the character for separating concatenated codes. It is also the default WBS code separator for new projects.  
Code Separator: .

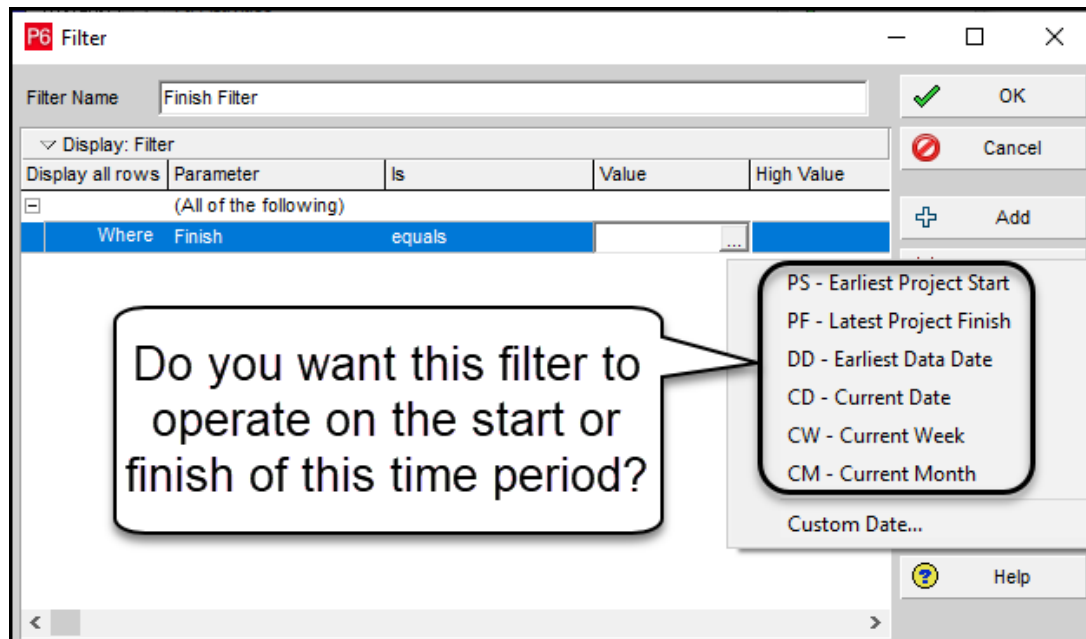
**Starting Day of Week**  
Specify the starting day of the week for calendars.  
First day of week: Monday

**Activity Duration**  
Specify the default duration for new activities.  
Default Duration: 5

**Password Policy**  
The Password Policy requires a minimum length of 8 characters and at least one number and one letter in a user's password.  
 Enable password policy

Buttons: Help, Close

When a **Finish Date** filter has been created the user may select **Current Date**, **Current Week** etc.



Version 20.4 changed the way the filter operated to select the end of the time period, whereas earlier versions used the start of the time period. The Administrator may make the software compatible with earlier versions with this option.

**NOTE:** It would appear more logical to me to have the filter operate on the end of the selected time period and I would not switch it on unless there was a demand to be compatible with earlier versions.

Accelerate your understanding of scheduling software to advance your scheduling career and be able to prepare better schedules with [Eastwood Harris books](#), training courses and online videos on the following software packages:

- Microsoft Project,
- Oracle Primavera P6 and
- Elecosoft (Asta) Powerproject

Online video training is available through Udemy through following these links:

- [Microsoft Project](#),
- [Oracle Primavera P6](#) and
- [Elecosoft \(Asta\) Powerproject](#)

Please follow these links:

- Eastwood Harris books and training materials are available here <https://www.eh.com.au>.
- Eastwood Harris inhouse, one-to-one and public training courses are offered through Primaskills Pty Ltd, [more details here>>>>](#).
- Resources for Oracle Primavera P6 users such as third party software that works with P6 and technical papers on Primavera P6 at <https://primavera.com.au/>.

Paul E Harris

Director Eastwood Harris Pty Ltd

16 July 2023