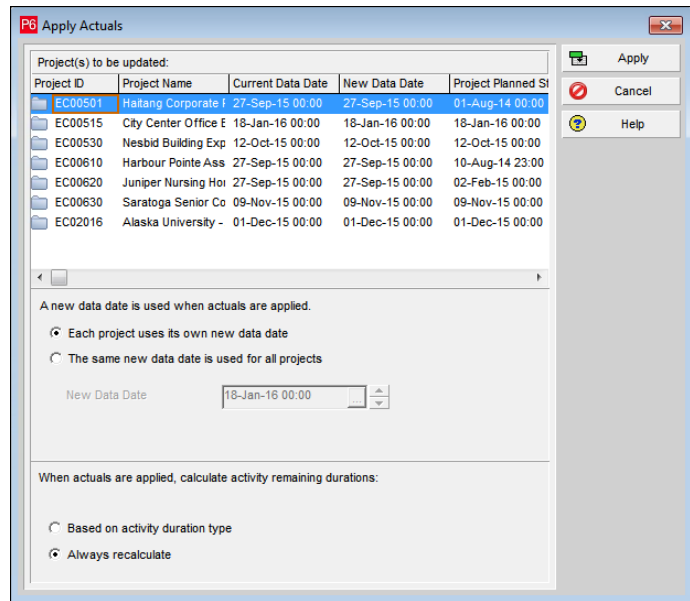


5 Data Date Default for Apply Actuals

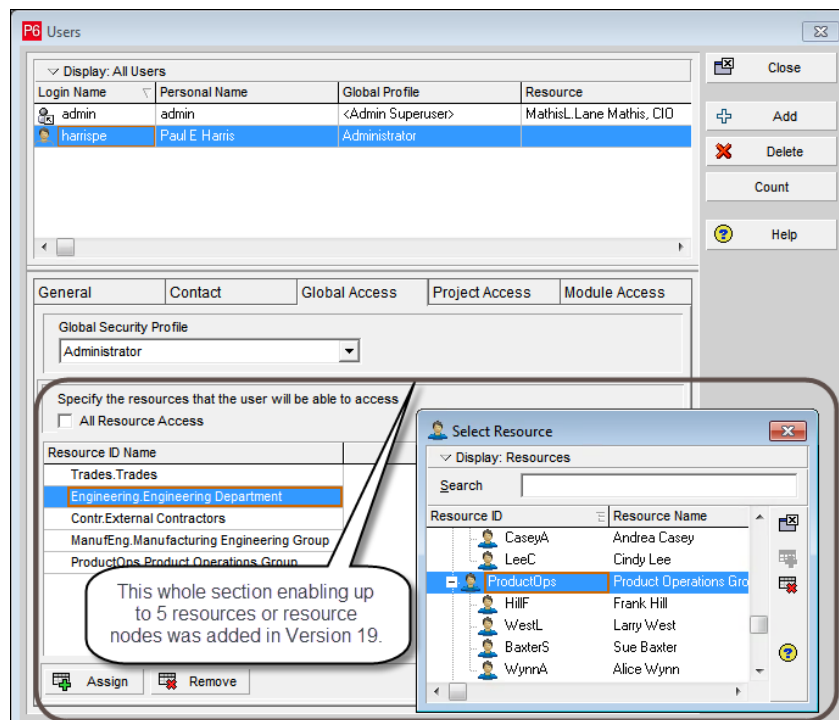
P6 Version 19 allows project to use their own **Data Date** when applying actuals.

In earlier versions all projects were set to the same **Data Date**.



6 Allow or Restrict Access to Resources from Multiple Parent Resources

Earlier versions only allowed one resource or resource node to be assigned to a user. P6 Version 19 introduced the ability to allow a user to be assigned up to five resources or resource nodes when defining resource access. A user may view and assign the selected resources and the child resources from resources assigned here:



7 Activity Details, Task tab

Tasks are a new function in P6 Version 19 allowing users to allow users to **VIEW ONLY** Tasks created in Primavera Cloud when a project integrated from Primavera Cloud to an EPPM database. Tasks are a function in Primavera Cloud where an activity may be broken down into Tasks which do not drive dates but allow a further granulation of an activity in to more detailed work, but they are different to Steps.



8 Eastwood Harris Pty Ltd Books

To see more explanations like this then please consider purchasing books by Paul Harris written on:

- Microsoft Project,
- Oracle Primavera P6 and
- Elecosoft Powerproject

These are available in many formats including paperback, spiral, Kobo, Kindle and iTunes.

These books are intended to be used:

- As a self-teach book and user guide, or training course handouts.
- Instructor PowerPoint slide shows are available and free pdf versions are supplied to educational organisations on request.

More information and links to sellers at this web site: <https://www.eh.com.au>

Paul E Harris

Director Eastwood Harris Pty Ltd

1 April 2020