

99 Tricks and Traps

for

Oracle Primavera P6

PPM Professional

***The Casual User's Survival Guide
Updated for Version 23***

By

Paul E Harris

of

Eastwood Harris Pty Ltd

©Copyright 2024 by Eastwood Harris Pty Ltd. No part of this publication may be reproduced or used in any form or by any method without the written permission of the author.

Oracle and Primavera are registered trademarks of Oracle and/or its affiliates.

Windows, Microsoft® Project 365, Microsoft® Project Standard 2021, Microsoft® Project Professional 2021, Microsoft® Office Project Standard 2019, Microsoft® Office Project Professional 2019, Windows and Excel are registered trademarks of Microsoft Corporation.

Elecosoft Powerproject is a registered trademark of Elecosoft®.

Adobe® and Acrobat® are registered trademarks of Adobe Systems Incorporated.

All other company or product names may be trademarks of their respective owners.

Screen captures reprinted with authorization from Oracle Corporation.

This publication was created by Eastwood Harris Pty Ltd and is not a product of Oracle Corporation.

DISCLAIMER

The information contained in this publication is to the best of the author's knowledge true and correct. The author has made every effort to ensure the accuracy of this publication but may not be held responsible for any loss or damage arising from any information in this publication. Furthermore, Oracle Corporation reserves the right in their documentation to make changes to any products to improve reliability, function, or design. Thus, the application of Service Packs or the use of upgraded software may result in the software operating differently from the descriptions in this publication.

AUTHOR AND PUBLISHER

Paul E Harris

Eastwood Harris Pty Ltd

e-mail: harrispe@eh.com.au

Web: <http://www.eh.com.au>

Tel: +61 (0) 4 1118 7701

Please send any comments on this publication to the author.

ISBN 978-0-6486355-0-5 – Perfect

ISBN 978-0-6486355-1-2 – eBook

30 January 2024

CURRENT BOOKS PUBLISHED BY EASTWOOD HARRIS

Create and Update an Unresourced Project Using Elecosoft (Asta) Powerproject Version 17

Planning and Control Using Microsoft Project 365 and 2021 - Including 2019, 2016 and 2013

99 Tricks and Traps for Microsoft Project 365 and 2021- A Casual User Guide Including 2019, 2016 and 2013

Planning and Control Using Oracle Primavera P6 Versions 18 to 23 PPM Professional

TABLE OF CONTENTS

1	INTRODUCTION	13
1.1	Background knowledge required to use this book	13
1.2	P6 Versions	13
1.3	Aim of this book	13
1.4	Information Sources	13
1.5	Important Points	14
2	GETTING THE ENVIRONMENT RIGHT – SETTING DATABASE OPTIONS.....	16
2.1	Understanding Databases.....	16
2.2	Understanding Database Options.....	17
2.3	Admin Preferences	17
2.3.1	General Tab.....	17
2.3.2	Time Periods, Hours per Time Period	19
2.3.3	Earned Value, Earned Value Calculation.....	20
2.3.4	Options	21
2.3.5	Industry.....	23
2.3.6	Consent Notice.....	25
2.3.7	Status of User Acceptance.....	25
2.3.8	Exception Site List.....	26
2.4	Admin, Categories.....	26
2.4.1	Notebook Topics	26
2.4.2	Units of Measurement.....	27
2.5	Admin, Currencies.....	27
2.6	Admin, Financial Period Calendars.....	28
2.7	Date and Time Display.....	29
2.8	Units Display	29
2.9	Printouts and Reports Header and Footers	29
2.10	Users and Security Profiles	30
2.11	Project Codes	31
2.12	Summarizing Projects.....	32
2.13	Job Services	34
3	SETTING UP USER PREFERENCES AND OTHER USER SETTINGS	35
3.1	Creating Users.....	35
3.2	User Preferences	35
3.2.1	Time Unit Formatting	36
3.2.2	Date Formatting.....	37
3.2.3	Users may See and Set Activity Start and Finish Times in the Date Picker box.....	38
3.2.4	Currency	39
3.2.5	Email.....	39
3.2.6	Assistance	39
3.2.7	Application.....	40

3.2.8	Password	41
3.2.9	Resource Analysis	41
3.2.10	Calculations	43
3.2.11	Startup Filters	44
3.2.12	Personal Identifiable Information Tab	45
3.3	Default Toolbar issues	46
3.4	Set Language	47
3.5	Portfolios	47
3.5.1	Difference between User Baselines and Project Baselines	47
3.6	Who has been messing with my project?	47
3.7	Closing Down	48
4	CREATING A NEW PROJECT	49
4.1	New Project Wizard	49
4.1.1	Date and Time	49
4.1.2	Close all other projects	49
4.1.3	EPS Node	49
4.1.4	Project ID	49
4.1.5	Project Must Finish By Date	50
4.2	Other Methods of Creating a Project	50
4.3	Setting Project Defaults and Other Data in the Projects Window Details Pane	51
4.3.1	General Tab, Status	51
4.3.2	Dates Tab, Scheduled Dates	51
4.3.3	Dates Tab, Anticipated Dates	52
4.3.4	Defaults Tab, Defaults for New Activities	53
4.3.5	Calculations tab, Activities	55
4.3.6	Calculations tab, Resources Assignments	55
4.3.7	Codes tab	55
4.3.8	Notebook tab	55
4.3.9	Resources tab	55
4.3.10	Settings tab	56
4.4	Tools, Schedule Options	57
4.5	Author's recommended new project setup	59
5	CALENDAR ISSUES	61
5.1	Non-Work time display	61
5.2	Copying Project Calendars	62
5.3	Inherit Holidays and Exceptions from a Global Calendar ...	62
5.4	Calendars for Calculating Project, WBS and Other Summary Durations	62
5.5	Resource Dependent Activity Start Date and Time	63
5.6	Project or Global calendars	64
5.7	Elapsed Duration Activities	64
5.8	Tips for Mixed Calendar Schedules	65

6	CREATING A WBS	67
6.1	Merge or Delete a WBS Node	67
6.2	WBS Node Separator	67
6.3	WBS Categories	68
6.4	Why is the WBS not displayed correctly?	69
6.5	Why can I not see the WBS in the Activities Window?	69
7	ADDING ACTIVITIES	70
7.1	New Activity Defaults	70
7.2	Duration Type	70
7.3	Percent Complete Type	72
7.4	Cost Account	72
7.5	Calendar	73
7.6	Copying Activities from other Programs	73
7.7	Copying Activities in P6	73
7.8	Renumbering Activity IDs	73
7.9	Finding the Bars in the Gantt Chart	74
7.10	Assigning Calendars to Activities	74
7.11	Assigning Activities to a WBS Node	74
7.12	Adding Splits to an Activity	75
7.13	Reordering or Sorting Activities	76
7.14	Undo	76
7.15	Spell Check	76
7.16	Updating Parameters in a Large Number or All Activities ..	76
8	FORMATTING	77
8.1	Activity Window Bar Formatting	77
8.2	Creating a Summary Bar	78
8.3	Adding a Bar Label	78
8.4	Baseline Bar Disappearing when an Activity is made an LOE	79
8.5	Why is there a gap in my Bar on the Data Date	79
8.6	No splits seen in an activity Actual bar with a Suspend and Resume	80
8.7	Displaying Free Float Bar	81
8.8	Displaying All Baseline Bars	81
8.9	Displaying a Baseline Critical Path Bar	81
8.10	Formatting Columns	82
8.11	Row Height and Show Icon	83
8.12	Moving and Rescaling the Timescale with the Mouse	83
8.13	Inserting Attachments – Text Boxes and Curtain	84
8.14	Line Numbers	84
8.15	Multiple Project Views Displayed Side by Side	85
8.16	Column Header Sort Arrow Direction Reversed	86

9	ADDING RELATIONSHIPS.....	87
9.1	Adding relationships	87
9.2	Relationship Colors	87
9.3	Milestone Reduced Relationship Types.....	88
9.4	Hiding relationships	89
9.5	Circular Relationships.....	89
9.6	Removing Relationships from Selected Activities.....	90
9.7	Dissolving Activities and Retain Lag	91
9.8	Reviewing Relationships, Leads and Lags	92
9.9	Ladder Scheduling	92
9.10	Relationship Comments	93
10	ACTIVITY NETWORK VIEW.....	94
10.1	Viewing Relationships in Selected WBS Nodes.....	94
10.2	Viewing a Project Using the Activity Network View	94
10.3	Formatting the Activity Boxes	95
10.4	Reorganizing the Activity Network.....	95
10.5	Saving and Opening Activity Network Positions	96
10.6	View Trace Logic.....	96
11	CONSTRAINTS	97
11.1	Assigning Constraints	97
11.2	Number of Constraints per Activity	97
11.3	As Late As Possible Constraint.....	97
11.4	Expected Finish Constraint.....	98
11.5	Constraint Identification	98
11.6	External Dates	98
11.7	Mandatory Constraints	99
11.8	Activity Notebook.....	99
12	GROUP, SORT AND LAYOUTS.....	100
12.1	Activity Groups and Sort form.....	100
12.2	Sorting.....	104
12.3	Group and Sort Projects at Enterprise Level	104
12.4	Understanding Layouts.....	104
12.5	Copying Layouts from one database to another	105
12.6	Removing/Reordering Bottom Pane tabs.....	105
12.7	Disable Auto-Reorganization Shft+F12	105
13	FILTERS	106
13.1	Understanding Filters.....	106
13.2	Filter Types	106
13.3	Applying a Filter	107
13.4	Creating a New Filter.....	107
13.5	Creating Resource Filters	108
13.6	WBS Filters	108
13.7	Some Useful Ideas for Filters	108
13.8	Exporting Filters.....	109
13.9	Activity Critical Path Visibility Toolbar.....	110

13.9.1	Backward Resource Driven Critical Path.....	110
13.9.2	Enable Group and Sort.....	111
13.9.3	Backward Activity Critical Path.....	112
13.9.4	Forward Activity Critical Path	113
13.9.5	Activity Critical Path	113
13.9.6	Maximum Critical Path Count	114
13.9.7	Increase Maximum Multiple Critical Path Counts.....	114
13.9.8	Decrease Maximum Multiple Critical Path Counts	115
13.9.9	Select Maximum Multiple Critical Path Counts.....	115
14	PRINTING AND REPORTS	116
14.1	Output Options.....	116
14.2	Management Considerations.....	117
14.3	Printing	118
14.4	Not able to type a “S” in the Header or Footer	121
14.5	Running Reports	121
14.6	Editing reports.....	121
14.7	Publish to a Web Site	122
14.8	Understanding Visualizer.....	122
15	UNDERSTANDING P6 DATE FIELDS.....	123
15.1	Early Start and Early Finish	124
15.2	Late Start and Late Finish	125
15.3	Actual Start and Actual Finish	125
15.4	Planned Dates Calculations	126
15.5	Planned Dates Issues.....	127
15.6	How to use Update Progress on an In-Progress Schedule.....	129
15.7	Remaining Early Start and Finish.....	130
15.8	Remaining Late Start and Finish	130
16	SCHEDULING OPTIONS	131
16.1	Setting the Schedule Options	131
16.2	Ignore relationships to and from other projects	133
16.3	Make open-ended activities critical.....	133
16.4	Use Expected Finish Dates.....	134
16.5	Schedule automatically when a change affects dates.....	135
16.6	Level resources during scheduling	135
16.7	Recalculate resource costs after scheduling	135
16.8	When scheduling progressed activities use	135
16.9	Calculate start-to-start lag from	137
16.10	Define critical activities as	137
16.11	Calculate float based on finish date of.....	140
16.12	Compute Total Float as	141
16.13	Calendar for scheduling Relationship Lag	141

17	SETTING THE BASELINE	142
17.1	Typical Baseline types.....	142
17.2	Number of Baseline Allowed	142
17.3	Setting a Baseline	142
17.4	Displaying Baseline Data.....	143
17.5	Difference between the Project Baseline and a User Baseline	144
17.6	Limitation on Viewing Baseline Data	144
17.7	Understanding the <Current Project> in the Assign Baseline form	145
18	UPDATING AN UNRESOURCED SCHEDULE.....	146
18.1	Updating Process	146
18.2	Calculation of Durations of an In-progress Activity	147
18.3	Default Percent Complete	148
18.4	Activity % Complete.....	149
18.5	Understanding the Current Data Date	150
18.6	Updating the Schedule	150
18.6.1	<i>Updating Activities Using the Status Tab of the Details Form</i>	<i>150</i>
18.6.2	<i>Updating Activities Using Columns.....</i>	<i>152</i>
18.7	Progress Spotlight and Update Progress	152
18.7.1	<i>Progress Spotlight</i>	<i>152</i>
18.7.2	<i>Update Progress.....</i>	<i>153</i>
18.8	Suspend and Resume.....	154
18.9	Scheduling the Project.....	155
18.10	Comparing Progress with Baseline	156
18.11	Progress Line Display on the Gantt Chart.....	157
18.12	Comparing Schedules.....	158
18.13	Check Schedule Report	158
18.14	Checking a Schedule	160
19	CREATING ROLES AND RESOURCES	161
19.1	Understanding Roles and Resources.....	161
19.2	Creating Roles	162
19.3	Creating Resources.....	164
19.3.1	<i>Resources Window.....</i>	<i>164</i>
19.3.2	<i>Adding Resources</i>	<i>165</i>
19.3.3	<i>General Tab</i>	<i>165</i>
19.3.4	<i>Codes Tab</i>	<i>165</i>
19.3.5	<i>Details Tab.....</i>	<i>166</i>
19.3.6	<i>Units and Prices Tab</i>	<i>170</i>
19.3.7	<i>Roles Tab</i>	<i>171</i>
19.3.8	<i>Notes Tab.....</i>	<i>171</i>
19.3.9	<i>Progress Reporter Tab</i>	<i>171</i>

19.3.10 Role Rate Vary Over Time – P6 Version 20 Enhancement	172
19.3.11 Resource and Role Cost Spread Consider Rate Changes Over Time	173
20 ASSIGNING ROLES, RESOURCES AND EXPENSES	175
20.1 Understanding Roles, Resources and Expenses	175
20.2 Understanding Resource Calculations and Terminology..	176
20.3 Project Window Resource Preferences	178
20.3.1 Resources Tab	178
20.3.2 Understanding Resource Option to Drive Activity Dates	179
20.3.3 Calculations Tab	180
20.3.4 User Preferences Applicable to Assigning Resources...	180
20.3.5 Assignment Staffing	181
20.4 Activities Window Resource Preferences and Defaults....	182
20.4.1 Details Status Form	182
20.4.2 Activity Type	183
20.4.3 Duration Type	186
20.5 Assigning and Removing Roles	188
20.6 Assigning and Removing Resources	189
20.6.1 Assigning a Resource to an Assigned Role	189
20.6.2 Assigning a Resource to an Activity Without a Role	191
20.6.3 Removing a Resource	192
20.6.4 Assigning a Resource to an Activity More Than Once ...	194
20.7 Resource and Activity Duration Calculation and Resource Lags	194
20.7.1 Activity Duration	194
20.7.2 Resource Lag	195
20.8 Expenses	195
20.8.1 Expenses Window	195
20.8.2 Expenses Tab in the Activities Window	196
20.9 Suggested Setup for Creating a Resourced Schedule	196
21 RESOURCE OPTIMIZATION	199
21.1 Reviewing Resource Loading	199
21.1.1 Activity Usage Spreadsheet.....	199
21.1.2 Activity Usage Profile	201
21.1.3 Resource Usage Spreadsheet	202
21.1.4 Editing the Resource Usage Spreadsheet – Bucket Planning	203
21.1.5 Range Copy and Range Paste P6 Version 22 and Version 23 Enhancement	203
21.1.6 Resource Usage Profile	204
21.1.7 Histogram Bars Exact Values – P6 Version 20 Enhancement.....	205
21.1.8 Stacked Histogram	206
21.1.9 Activity Usage Profile Displaying S-Curves	207

21.2	Resource Assignments Window	208
21.3	Copying and Pasting into Excel	209
21.4	Other Tools for Histograms and Tables	209
21.5	Methods of Resolving Resource Peaks and Conflicts.....	210
21.6	Resource Leveling.....	211
21.6.1	<i>Methods of Resource Leveling.....</i>	<i>211</i>
21.6.2	<i>Resource Leveling Function</i>	<i>213</i>
21.6.3	<i>Level Resources Form</i>	<i>213</i>
21.7	Guidelines for Leveling	215
21.8	What to look for if Resources are Not Leveling	217
21.9	Resource Curves	218
22	UPDATING A RESOURCED SCHEDULE.....	220
22.1	Understanding Budget Values and Baseline Projects	221
22.1.1	<i>Cost and Units Budget Values</i>	<i>221</i>
22.1.2	<i>Baseline Project and Values.....</i>	<i>222</i>
22.2	Understanding the Current Data Date	222
22.3	Information Required to Update a Resourced Schedule	223
22.4	Activities Window – Percent Complete Types.....	225
22.5	Using Steps to Calculate Activity Percent Complete	225
22.6	Updating the Schedule	227
22.6.1	<i>Recommended Preferences, Defaults and Options for Updating a Project</i>	<i>227</i>
22.6.2	<i>Updating Dates and Percentage Complete</i>	<i>231</i>
22.7	Updating Resources.....	231
22.8	Updating Expenses	232
23	OTHER METHODS OF ORGANIZING PROJECT DATA	234
23.1	Activity Codes	234
23.1.1	<i>Understanding Activity Codes.....</i>	<i>235</i>
23.1.2	<i>Activity Code Creation</i>	<i>235</i>
23.1.3	<i>Defining Activity Code Values and Descriptions.....</i>	<i>236</i>
23.1.4	<i>Assigning Activity Code Values to Activities.....</i>	<i>237</i>
23.1.5	<i>Grouping, Sorting and Filtering with Activity Codes</i>	<i>238</i>
23.1.6	<i>Importing Activity Codes with Excel.....</i>	<i>238</i>
23.2	User Defined Fields.....	238
23.3	WBS Category or Project Phase	240
23.4	Resource Codes	241
23.5	Cost Accounts.....	242
23.6	Owner Activity Attribute.....	243
23.7	Assignment Codes – P6 Version 20 Enhancement	243
23.8	Role Codes – Version 20 Enhancement.....	245
24	GLOBAL CHANGE.....	246
24.1	Introducing Global Change	246
24.2	The Basic Concepts of Global Change	246
24.3	Important Points.....	249

25	MULTIPLE USER MANAGEMENT.....	251
25.1	Multiple User Data Display Issues	251
25.2	Understanding F5	252
25.3	Understanding F10.....	253
25.4	Preventing other users from changing my project.....	253
26	MULTIPLE PROJECT SCHEDULING	254
26.1	Default Project	254
26.2	Multiple Projects in One Primavera Project.....	254
26.3	Multiple P6 Primavera Projects Representing One Project.....	255
26.4	Setting Up Primavera Projects as Sub-projects	257
26.4.1	Opening One or More Projects.....	257
26.4.2	Creating a WBS for Multiple Projects	258
26.4.3	Understanding the Default Project	258
26.4.4	Multiple Projects with Different Data Dates – Version 19 and Earlier.....	260
26.4.5	Data Date Selection in Multiple Project Scheduling – P6 Version 20 Enhancement.....	261
26.4.6	Multiple Project Scheduling Options Selection – P6 Version 20 Enhancement.....	261
26.4.7	Total Float Calculation.....	263
26.5	Setting Baselines for Multiple Projects	263
26.6	Restoring Baselines for Multiple Projects	264
26.7	Tracking Window.....	267
27	EXPORTING AND IMPORTING	270
27.1	Supported Project File Types	271
27.2	Other Data Files Types	274
27.3	Send Project.....	275
27.4	Unable to import a XER created in a later version of P6..	275
27.5	Importing from Excel.....	275
27.5.1	Notes and/or Restrictions on Export.....	276
27.5.2	Notes and Restrictions on Import.....	277
27.5.3	Importing and Exporting to Microsoft Project	279
27.6	Importing from another P6 Database.....	280
27.7	Import and Export Filters.....	280
27.8	Import or Export data with Keystroke recorders	280
27.9	Importing Activity Codes into P6 using and XER file and Excel.....	281
27.10	Lean Tasks may be imported using an XML file	283
27.11	Why will my import not work?.....	284

28 OTHER TOOLS AND FEATURES	285
28.1 Check In and Check Out	285
28.2 Activity Discussion Feature.....	285
28.3 Advanced Schedule Options.....	285
28.4 Reflection Projects	286
28.5 Who Has the Project Open?.....	287
28.6 Deleting Mass Data from a Project	287
28.7 Finding a Bar in the Gantt Chart	287
28.8 Check for Open Ends	287
28.9 Chasing or Tracing Logic.....	287
28.10 Why have I got Negative Float?	288
28.11 Causes of Rounding Errors in P6	289
28.12 Store Period Performance – P6 Version 19 and Earlier ...	290
28.13 Different Projects may have different Financial Periods – P6 Version 20 Enhancement.....	291
28.14 What are the differences in P6 Versions?	292
28.15 I am on a Virtual Machine and Help will not load?.....	292
28.16 Installing two versions of P6.....	292
28.17 Project Checker Improvement P6 Version 23 Enhancement	293
29 USEFUL WEBSITES	295
29 INDEX	297

8 FORMATTING

The formatting of all P6 windows is very similar. Thus, Grouping and Sorting projects in the Project window is very similar to Grouping and Sorting activities in the Activities window.

8.1 Activity Window Bar Formatting

There are many issues with all the formatting of the bars in all of the Oracle Primavera P6 Activity Layouts supplied with the software. Also **NEVER** select **Default** in the **Bars** form as this will apply some bad bar formatting to your layout.

The author has placed a layout on www.primavera.com.au and www.eh.com.au under **Technical Papers**, titled **www.primavera.com.au_layout** that has fixed the bar formatting issues discussed below.

It is suggested that downloading this layout will save users a significant amount of formatting on their existing layouts.

The bar formatting from this Layout may be copied to any other Layout in the **Bars** form, **Copy from...** function.

The issues that are prevalent in some or all of the Oracle Primavera Layouts are:

- ❖ There is Total Float displayed on complete activities,
- ❖ Relationships are displayed on the Baseline Bars,
- ❖ The Baseline bar formatting for all Baseline bars are all the same size, color and in the same position, thus it is difficult to see which baseline is being displayed,
- ❖ Three Baseline Milestones will not be displayed,
- ❖ Bar Text is assigned to a number of bars. Bar text should be assigned to a blank bar, so it may be simply hidden or displayed.
- ❖ LOE bars are not displayed, so they are hidden when created.

The full explanation of the issues and fixes made in the **www.primavera.com.au_layout** are documented in the authors other P6 books.

You have several choices for sorting out the bar formatting:

- ❖ Delete the Oracle Layouts and use the **www.primavera.com.au_layout** as a basis for all your layouts, or
- ❖ Copy the **www.primavera.com.au_layout** bar formatting to all other Layouts including the Oracle Layouts, using the **Bars** form **Copy From..** function or
- ❖ Edit the layouts you are using.

8.2 Creating a Summary Bar

It is not obvious how to create a Summary bar:

- ❖ When creating a new Summary bar, you will not be able to select **Summary** from the filter drop down box,
- ❖ You must check the **Bar Settings** tab, **Show bar for grouping bands** to create a Summary Bar:

Display	Name	Timescale	User Start Date	User Finish Date	Filter	Preview
<input type="checkbox"/>	Activity Name on	Current Bar			Normal or Level of I	
<input type="checkbox"/>	Finish Constraint	Remain Bar			Has Finish Constrai	
<input type="checkbox"/>	Dates on Bar	Current Bar			All Activities	
<input checked="" type="checkbox"/>	Milestone	Current Bar			Milestone	
<input checked="" type="checkbox"/>	% Complete	% Complete Bar			Normal	
<input checked="" type="checkbox"/>	Summary	Current Bar			Summary	
<input checked="" type="checkbox"/>	Float Bar	Float Bar			Not Started or In Pri	
<input checked="" type="checkbox"/>	Neg Float Bar	Neg Float Bar			Negative Float	

Bar Style		Bar Settings	Bar Labels
Grouping Band Settings			
<input type="checkbox"/> Show bar when collapsed <input checked="" type="checkbox"/> Show bar for grouping bands			

8.3 Adding a Bar Label



If you wish to add a label, then it is best to create a bar that does not display the bar and only has a Label. This may be displayed against all activities and be easily displayed or hidden and saves editing multiple bars:

Display	Name	Timescale	User Start Date	User Finish Date	Filter	Preview
<input type="checkbox"/>	Dates on Bar	Current Bar			All Activities	

Bar Style		Bar Settings	Bar Labels
Position	Label		
Left	Start		
Right	Finish		

8.4 Baseline Bar Disappearing when an Activity is made an LOE


Often, after a Baseline has been set, there is a requirement to add more detail to a baselined activity but retain a view of the original Baseline bar. This may be achieved by converting the original Activity to an LOE and adding the detailed activities below the LOE and linking the new activities to the new LOE activity. If the original Baseline activity disappears, then you need to open the bars form and set the filter to **All Activities** and the Baseline bar will be displayed:

Bars					
Display	Name	Timescale	User Start Date	Filter	Preview
<input type="checkbox"/>	Project Baseline Bar	Project Baseline Bar		All Activities	
<input type="checkbox"/>	Project Baseline MS	Project Baseline Bar		Milestone	


8.5 Why is there a gap in my Bar on the Data Date

When an activity is in-progress the activity **Remaining Early Start** is set to the activity calendar Start Date & time,

- ❖ When the **Data Date** is set to Friday 17:00 there will be a gap between the **Data Date** line and the start of the **Remaining Bar**, Monday 08:00:

Finish	Remaining Early Start	Aug 25							Sep 01						
		M	T	W	T	F	S	S	M	T	W	T	F	S	S
															
05-Sep-25 16:00	01-Sep-25 08:00														

- ❖ To prevent this set the **Data Date** to the Activity Calendar Start Date and Time, i.e. the **Remaining Early Start** date and time:

Finish	Remaining Early Start	Aug 25							Sep 01						
		M	T	W	T	F	S	S	M	T	W	T	F	S	S
															
05-Sep-25 16:00	01-Sep-25 08:00														

NOTE: Microsoft Project normally defaults the **Status Date** to the end of a day, not the start.

8.6 No splits seen in an activity Actual bar with a Suspend and Resume

Oracle Activity Layouts do not neck and display a Suspend Date on an Actual Bar:

Aug 25							Sep 01						
Mon	Tue	Wed	Thr	Fri	Sat	Sun	Mon	Tue	Wed	Thr	Fri	Sat	Sun
[Blue bar from Aug 25 to Sep 01]							[Red bar from Sep 01 to Sep 02]						
Status <input checked="" type="checkbox"/> Started 25-Aug-25 08:00 ... Duration % 40% <input type="checkbox"/> Finished 05-Sep-25 16:00 ... Suspend 25-Aug-25 16:00 ... Exp Finish ... Resume 03-Sep-25 08:00 ...													

- ❖ To display the Suspend date on the bar you need to open the **Bars** form and select the **Actual Work** bar and check the **Bar Necking Settings, Activity nonwork intervals**:

Display	Name	Timescale	User Start	User Finish	Filter	Preview
<input checked="" type="checkbox"/>	Actual Work	Actual Bar			Normal	[Blue bar with suspend/resume]
<input checked="" type="checkbox"/>	Remaining Work	Remain Bar			Normal and Non-work	[Green bar]

Bar Style **Bar Settings** **Bar**
Bar Necking Settings
☐ Calendar nonwork time
☒ Activity nonwork intervals

- ❖ The result be as per below and the Suspend date displayed:

Aug 25							Sep 01						
Mon	Tue	Wed	Thr	Fri	Sat	Sun	Mon	Tue	Wed	Thr	Fri	Sat	Sun
[Blue bar from Aug 25 to Sep 01]							[Red bar from Sep 01 to Sep 02]						
Status <input checked="" type="checkbox"/> Started 25-Aug-25 08:00 ... Duration % 40% <input type="checkbox"/> Finished 05-Sep-25 16:00 ... Suspend 25-Aug-25 16:00 ... Exp Finish ... Resume 03-Sep-25 08:00 ...													

8.7 Displaying Free Float Bar

By default, P6 PPM will not display the **Free Float** bar and nor will **Visualizer**. If it is important to display it, there is an option using **UDF fields** and a **Global Change**:

- ❖ Create a **UDF Free Float Start, Free Float Finish** and **Free Float Value**:

Title	Data Type
Free Float Finish	Finish Date
Free Float Start	Start Date
Free Float Value	Number

- ❖ Populate them with a **Global Change**, the division by 8 changes hours to days. When different calendars are used, say 10 hour or several calendars, then you will need to revise the Global Change:

Then	Parameter	Is	Parameter/Value	Operator	Parameter/Value
	Free Float Start	=	Remaining Early Finish		
And	Free Float Value	=	Free Float	/	8.00
And	Free Float Finish	=	Remaining Early Finish	+	Free Float Value

- ❖ Then create a **User Bar** between the dates:

Display	Name	Timescale	User Start Date	User Finish Date	Filter
<input checked="" type="checkbox"/>	Free Float	User Dates	Free Float Start	Free Float Finish	Not Started and In Progress

NOTE: It is important to set the filter as in the picture above, so a Total Float Bar is not displayed on completed activities.

8.8 Displaying All Baseline Bars

The Oracle Primavera **Bars** form, **Default** option does not show either LOE or Summary bars, to show these bars you must format you bars as follows in the **Bars** form:

Display	Name	Timescale	Filter	Preview
<input checked="" type="checkbox"/>	Primary Baseline	Primary Baseline Bar	All Activities	
<input type="checkbox"/>	Primary Baseline	Primary Baseline Bar	Milestone	
<input type="checkbox"/>	Primary Baseline	Primary Baseline Bar	Summary	

8.9 Displaying a Baseline Critical Path Bar



P6 by default does not display a **Baseline Critical** bar, but once you have set a Baseline you will find there are many more fields available in the columns form, including the **BL Total Float**, which may be used to draw a **Baseline Critical** bar.

To draw a **Baseline Critical** bar:

- ❖ Create but do not apply a Baseline Critical Filter, this will be used later:

Display all rows	Parameter	Is	Value	High Value
<input type="checkbox"/>	(All of the following)			
	Where	BL Project Total Float	equals	0d

- ❖ Create a Baseline Critical bar as per the picture below. It should be in the same position, which is set in the **Bar Style** tab, but below it in the Bars form, so it will be drawn over the top:

Display	Name	Timescale	User S	User F	Filter	Preview
<input checked="" type="checkbox"/>	Project Baseline Bar	Project Baseline Bar			All Activities	
<input checked="" type="checkbox"/>	Baseline Critical	Project Baseline Bar			Baseline Critical	

- ❖ The Baseline Critical bar will be drawn over the Baseline bar:



- ❖ **NOTE:** If you make the filter and layout Global, then any user may use the layout to display the Baseline Critical bar.

8.10 Formatting Columns

Column formatting is simple and may be completed by:

- ❖ Dragging columns to a new position and adjusting the width by dragging, or
- ❖ Opening the **Columns** form which is self-explanatory.
- ❖ It is often better to edit the column name so you may create narrower columns and still read the column name. For example, I always rename **Original Duration** to **Orig Dur**,
- ❖ **NOTE:** You will find that some columns, like the **Calendar** column may not be left formatted, only center or right.

8.11 Row Height and Show Icon


The height of all rows may be formatted by selecting:

- ❖ **View, Table Font and Row** to open the **Table, Font and Row** form.
- ❖ The options in this form are self-explanatory.


The height of a single row may be manually adjusted in a similar way to adjusting row heights in Excel, just grab the lower line of a cell and drag.

8.12 Moving and Rescaling the Timescale with the Mouse

Most formatting of the timescale may be completed with the mouse:

- ❖ To display hidden parts of the schedule the timescale may be grabbed and moved by placing the cursor in the top half of the Timescale. The cursor will turn into a ; left click and drag left or right.

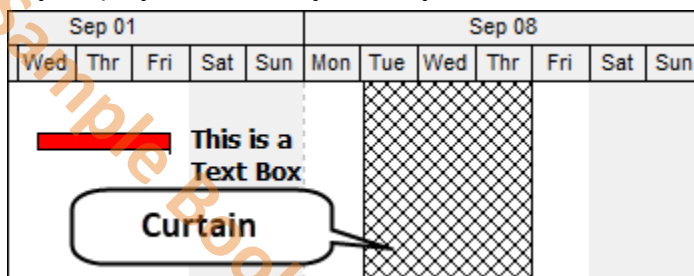
Dec 13							Dec 20							Dec 27						
M	T	W	T	F	S	S	M	T	W	T	F	S	S	M	T	W	T	F	S	S

- ❖ The timescale may be rescaled, therefore increasing or decreasing the length of the bars and displaying more or less of the schedule, by placing the cursor in the bottom half of the Timescale. The cursor will turn into a ; click, hold and drag left to make the bars shorter and right to make the bars longer.
- ❖ When there are no bars in view when you are viewing a time ahead or behind the activity dates, you may double-click in the **Gantt Chart** area to bring them back into view.

8.13 Inserting Attachments – Text Boxes and Curtains

Text Boxes and **Curtains** may be added to the Gantt Chart by right clicking in the Gantt Chart and selecting the required command.

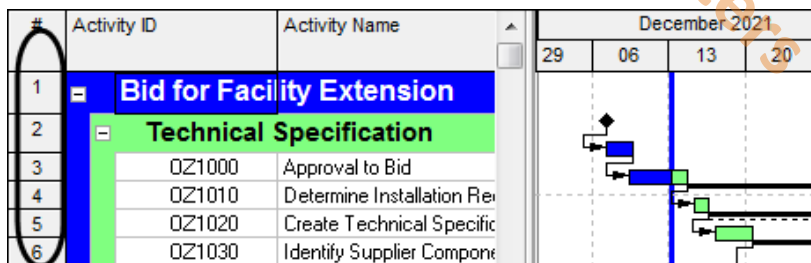
- ❖ A **Text Box** will be attached and move with the activity.
- ❖ **Curtains** are useful for highlighting holidays etc. and are only displayed in the Layout they are created in:



8.14 Line Numbers

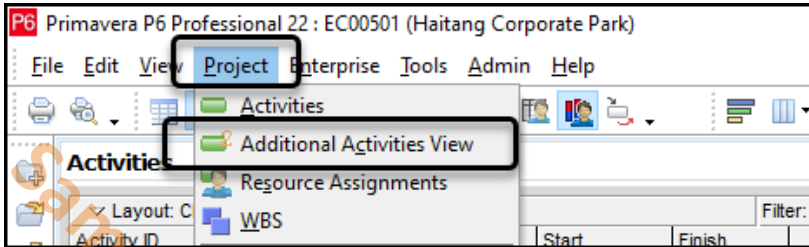
Version 8.2 introduced a Microsoft Project style **Line Numbers**.

- ❖ Select **View, Line Number** to display or hide the Line Number.
- ❖ This is a very useful feature for reviewing a schedule to ensure that everyone in a meeting is looking at the same activity.
- ❖ But, as in Microsoft Project, this is an order and the number will change if the schedule is reordered.

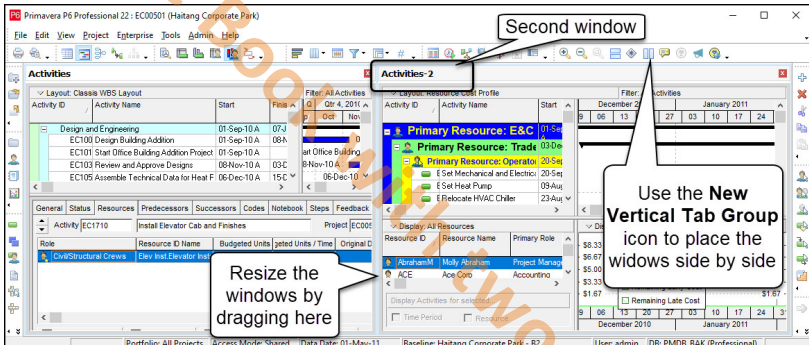


8.15 Multiple Project Views Displayed Side by Side

P6 Version 22 added an additional option in the **Project** menu titled **Additional Activities View**:



This option will open a second view of the project(s) that are opened. The projects views may then be resized etc.:



The Oracle description was not clear to me, but I found by experiment that:

- ❖ Each window may be formatted separately
- ❖ Each window may be printed separately by clicking in the window that is required to be printed.
- ❖ The **Schedule Options** and **Schedule Check Report** options may not be different for each view and scheduling one view will schedule both views.

8.16 Column Header Sort Arrow Direction Reversed

Although not listed as an enhancement in the Oracle documentation, the arrow in a column header has been reversed in P6 Version 22 and now when it points up the column is sorted alphabetically down, as in the EPPM Web tool:

Activity ID	Activity Name
City Center Office Building Addition	
Design and Engineering	
EC1000	Design and Engineering
EC1010	Site Preparation
EC1030	Review Technical Data on Heat Pumps
EC1050	Assemble Technical Data for Heat Pump
EC1160	Review Technical Data on Heat Pumps

Activity ID	Activity Name
Haitang Corporate Park	
Design and Engineering	
EC1000	Design and Engineering
EC1010	Site Preparation
EC1030	Review Technical Data on Heat Pumps
EC1050	Assemble Technical Data for Heat Pump
EC1160	Review Technical Data on Heat Pumps

This change operates in all windows and on all data items.

13 FILTERS

13.1 Understanding Filters

Primavera has the ability to display activities that meet specific criteria. You may want to see only the incomplete activities, or the work scheduled for the next couple of months or weeks, or the activities that are in-progress.

Primavera defaults to displaying all activities. There are a number of pre-defined filters available that you may use or edit. You may also create one or more of your own.

A filter may be applied to display or to highlight only those activities that meet a criterion. Unfortunately, the **Highlight** function does allow the normal functions of printing the highlighted activities, reversing highlighting or hiding highlighted activities.

13.2 Filter Types

There are four types of filters:

- ❖ **Default** filters which are supplied with the system and may not be edited or deleted but may be copied and then edited or modified and are often used in conjunction with the formatting of bars.
- ❖ **Global** filters which are made available to anyone working in the database, and
- ❖ **User Defined** filters which are defined by a user and available only to that user, unless it is made into a **Global** filter or **Layout** filter,
- ❖ **Layout** filters are only available when the current layout is applied.
NOTE: If the current layout is a **Project** Layout, then this effectively makes the **Layout** filter a project filter.

In addition:

- ❖ The **Group and Sort** function **Show Summaries Only** also works as a filter and displays only summaries (Bands), and no activities.
- ❖ The **View**, **Check Schedule** and **Activity Critical Path** options are both in effect predefined filters.


The following types of filters are not available:

- ❖ **Drop down** or **Auto filters** as in Excel and Microsoft Project.
- ❖ **Interactive** filters as available in SureTrak, Powerproject and Microsoft Project. This is when a filter is applied, and the user is offered choices from a drop-down list. The lack of this function may result in an excessive quantity of filters being generated or the user continually editing frequently used filters.
- ❖ **Project Filters** which the absence of often results in a proliferation of Global filters to allow all users of a project to access the filters designed for a specific project. This creates an ongoing maintenance task for the database administrator, removing old filters after the project is complete.

NOTE: It is recommended that in large databases a coding system is set up for Global filters when users are allowed to create them or make users use Layout filters.

13.3 Applying a Filter

Filters are applied from the **Filters** form and be opened by:

- ❖ Clicking on the  icon, or
- ❖ Selecting **View, Filters..., Customize...** or
- ❖ Right-clicking in the columns area and selecting **Filters...**

NOTE: If the **All Activities** check box in the **Filter** form is not checked then there is a filter applied.

13.4 Creating a New Filter

Filters may be created from the **Filters** form and are fairly self-explanatory.

To see how filters are constructed you may either:

- ❖ Copy an existing Global filters and open,
- ❖ Look at other filters, if they exist, or
- ❖ Buy one of my other P6 books.

13.5 Creating Resource Filters

When filtering on resources, the filter must use the option of **contains** in the **Is** column and not **equals**. An activity will not be selected with a filter using the **equals** it has been assigned more than one resource.

13.6 WBS Filters

Filters created for a WBS Code will only work on the project they are created in because the WBS Code includes the Project ID.

NOTE: If your project uses WBS filters, then you should not change the Project ID of your Current or Work In-progress project. When you copy your project, then the copies should be assigned a new Project ID and the project you are working on should always have the same Project ID.

13.7 Some Useful Ideas for Filters

Here are some things you can do with filters:

- ❖ Find SS and FF relationships by using the **Predecessor** and **Successor** contain **SS** or **FF**. This is useful when used in conjunction with highlighting.

▼ Display: Filter				
Display all rows	Parameter	Is	Value	High Value
<input type="checkbox"/>	(Any of the following)			
<input type="checkbox"/>	Where Predecessor Details	contains	SS	
<input type="checkbox"/>	Or Predecessor Details	contains	SS	
<input type="checkbox"/>	Or Successor Details	contains	FF	
<input type="checkbox"/>	Or Successor Details	contains	FF	


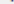

- ❖ Isolate activities with a specific resource by using the **Resource Name** plus **contains**. If you use **Resource Name** plus **equals**, you will not see any activity that has more than one resource assigned.

Display all rows	Parameter	Is	Value	High Value
<input type="checkbox"/>	(All of the following)			
<input type="checkbox"/>	Where Resource IDs	contains	PM	

- ❖ When an activity name contains a word, the text that is entered is not text sensitive, so the filter below will isolate activities with Bid or bid in the name:

Display all rows	Parameter	Is	Value	High Value
<input type="checkbox"/>	(All of the following)			
<input type="checkbox"/>	Where Activity Name	contains	bid	

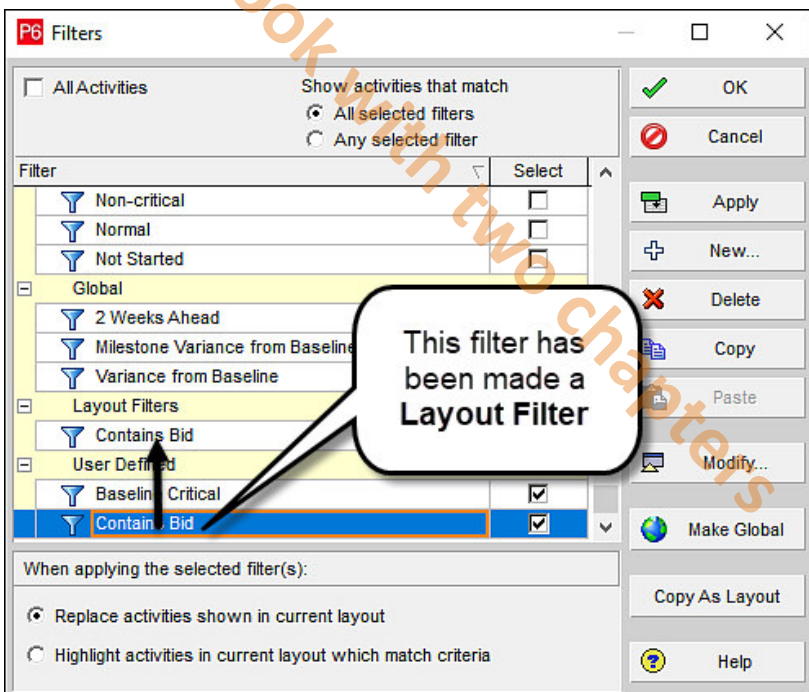
- ❖ Creating a look-ahead filter, filtering on the following parameters:

Display all rows	Parameter	Is	Value	High Value
	(Any of the following)			
	Where (All of the following)			
	Where Activity Status	equals	In Progress	
	Or (All of the following)			
	Where Start	is greater than	CD	
	And Start	is less than	DD+2W	

NOTE: The **Look-ahead** filter in the Oracle sample database does not work.

13.8 Exporting Filters

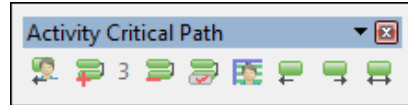
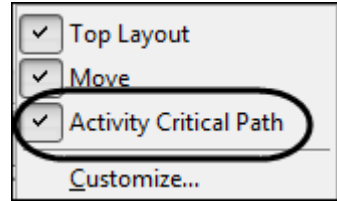
Filters may not be exported on their own, but if you wish to export a filter, then it may be made a **Layout** filter by using the **Copy As Layout** command in the **Filters** form and then have the Layout exported:



13.9 Activity Critical Path Visibility Toolbar

There is a new function and toolbar in Version 21 titled **Activity Critical Path**.

- ❖ The toolbar is displayed by right clicking on any toolbar and checking the **Activity Critical Path** option:
- ❖ This will display the toolbar:
- ❖ There is also a new menu item **View, Activity Critical Path**.
- ❖ **IMPORTANT NOTE:** Clicking on a button will activate the command and clicking again will deactivate the command.

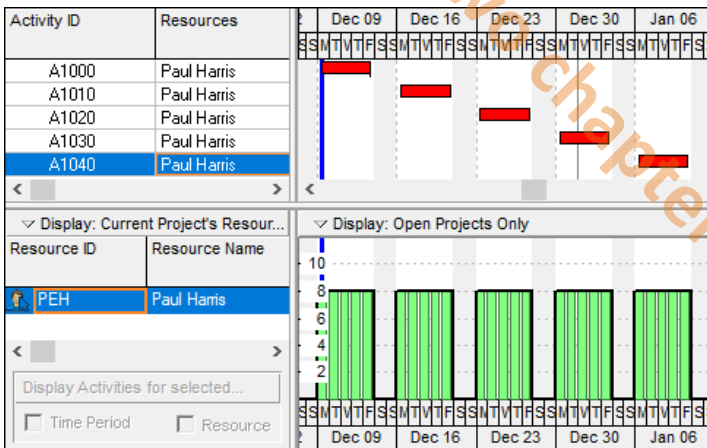


We will work through the icons one at a time and explain how the functions work.

13.9.1 Backward Resource Driven Critical Path



The schedule below has no relationships between activities and has been levelled.



When selecting A1040 and **Backward Activity Critical Path** you will see the result below:

Activity ID	Resources	Dec 09	Dec 16	Dec 23	Dec 30	Jan 06
A1040	Paul Harris					

When selecting A1040 and **Backward Resource Driven Critical Path** you will see the result below:

Activity ID	Resources	Dec 09	Dec 16	Dec 23	Dec 30	Jan 06
A1000	Paul Harris					
A1010	Paul Harris					
A1020	Paul Harris					
A1030	Paul Harris					
A1040	Paul Harris					

NOTE: Review the **Backward Activity Critical Path** now and then come back and review this one.

13.9.2 Enable Group and Sort



Clicking this button hides and displays the current applied Group and Sort bands. Hiding the bands enables the user to see the chain of events as an uninterrupted single chain of activities:

❖ Group and Sort enabled:

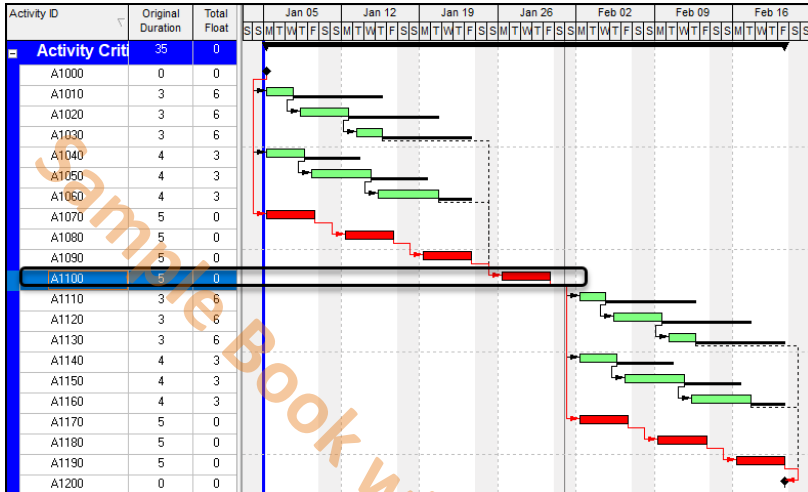
Activity ID	Activity Name	2012	2013	2014
		Q2 Q3 Q4	Q1 Q2 Q3 Q4	Q1 Q2 Q3 Q4
Harbour Pointe Assisted Living Center				
EC2430	Substantial Completion - All TCO			
Building 1				
EC2440	Complete Building 1			
Envelope				
EC2140	Shell Complete			
Roads, Utilities & Pavers				
EC2260	Entry Feature/Sign Wall			

❖ Group and Sort disabled:

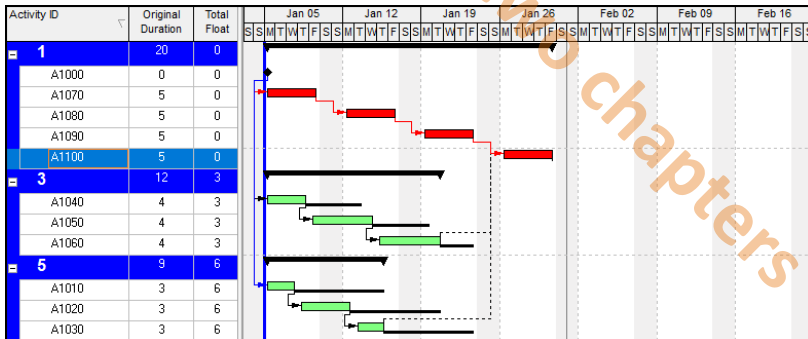
Activity ID	Activity Name	2012	2013	2014
		Q2 Q3 Q4	Q1 Q2 Q3 Q4	Q1 Q2 Q3 Q4
EC2140	Shell Complete			
EC2260	Entry Feature/Sign Wall			
EC2430	Substantial Completion - All TCO			
EC2440	Complete Building 1			

13.9.3 Backward Activity Critical Path

The schedule we will work with is as per below where Activity A1100 is preceded and succeeded by three chains of events with differing Total Float Values:



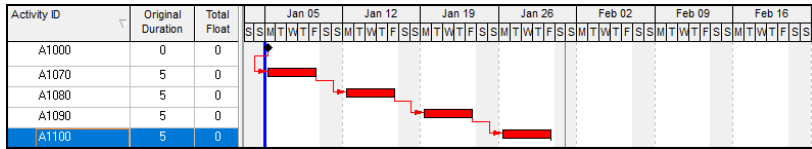
Users should also consider using the **Activity Critical Path** function in conjunction with the **Float Path Order** function to provide a clear view of the **Float Paths**:



The **Backward Critical Path** option displays the chain of events before a selected activity that has the least amount of Float.

If there is a critical path it will display this and if there is not, then it will find the chain of events with the least amount of float to the start of the project and display this as the **Backward Activity Critical Path**.

The picture below displays the **Backward Activity Critical Path** from activity A1100 which is a chain of events that is on the schedule Critical Path.

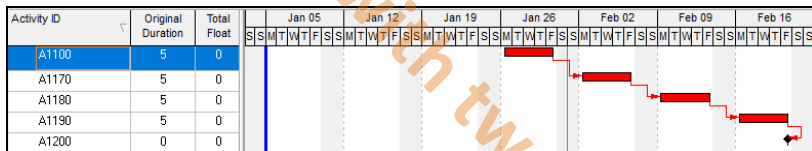


13.9.4 Forward Activity Critical Path



This option displays the chain of events after a selected activity that has the least amount of Float. If there is a critical path it will display this path and if there is not, then it will find the chain of events with the least amount of float to the end of the project and display this as the **Forward Activity Critical Path**.

The picture below displays the **Forward Activity Critical Path** from activity A1100 which is a chain of events that is on the schedule Critical Path.

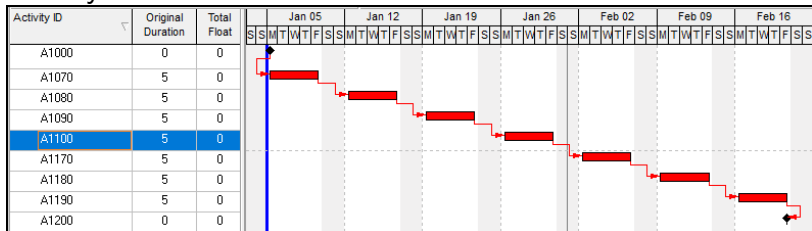


13.9.5 Activity Critical Path



This option displays the chain of events before and after a selected activity that has the least amount of Float, as per the parameters above.

Thus, the picture below shows both the **Forward Activity Critical Path** and **Backward Activity Critical Path** from Activity A1100.

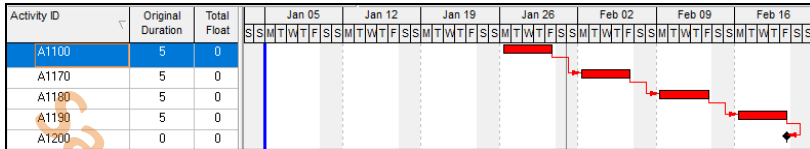


13.9.6 Maximum Critical Path Count

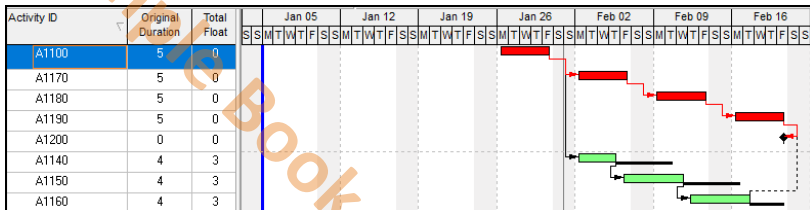


This button is not a command button but displays the number of **Maximum Critical Paths** that has been set by the user.

Selecting one as **Maximum Critical Path Count**:



Selecting two as **Maximum Critical Path Count**:



Selecting three as **Maximum Critical Path Count**:



Thus, this command determines how many chains of events will be displayed. Consider using the **Float Path Order** here.

13.9.7 Increase Maximum Multiple Critical Path Counts



This increases the value of the **Maximum Multiple Critical Path Counts** which is displayed in the button below.

13.9.8 Decrease Maximum Multiple Critical Path Counts



This decreases the value of the **Maximum Multiple Critical Path Counts** which is displayed in the button above.

13.9.9 Select Maximum Multiple Critical Path Counts



This opens a form allowing the setting of the **Maximum Multiple Critical Path Counts**:

Select Maximum Multiple Critical Path Count

2

1	2	3	4	5
6	7	8	9	10
11	12	13	14	15
16	17	18	19	20

29 Useful Websites

There are many web sites available with lots of great information. I have listed below some that you may wish to visit:

- ❖ **<https://www.eh.com.au>** my web site for all my books and courses including P6, Microsoft Project and Elecosoft (Asta) Powerproject.
- ❖ **<https://www.primavera.com.au>** my web site for all my books and courses focusing on P6. This has a page with a list of third-party software that works with P6.
- ❖ **<http://www.planningplanet.com>** the **Planning Planet** is a site that links networking planning, scheduling, program& project control professionals around the world.
- ❖ **<https://www.oracle.com/industries/construction-engineering/>** This page is the main portal for information on **Oracle Primavera Construction** software.
- ❖ **<https://edelivery.oracle.com>** the **Oracle E-Delivery** web site where you may download any Oracle product that is currently available to license.
- ❖ **<https://shop.oracle.com>** The **Oracle Store** is where you may purchase Oracle software online. You should be able to buy P6 software at a lower price by negotiating with an Oracle Partner.
- ❖ **<https://support.oracle.com>** The **Oracle Support** page is the main portal for support for Oracle software. You will need to create an account to log into the system and view the support database. This is a link to a site that is an Oracle Primavera site.
- ❖ **<https://www.oracle.com/communities/>** The Oracle Community site is an Oracle site and includes several links to other Oracle sites such as Blogs, Forums, Wiki, User Groups Support etc.
- ❖ **<https://tensix.com/>** The **Tensix Consulting** web site has hundreds of great blogs.

- ❖ **<https://www.planacademy.com/blog/>** The **Plan Academy's** blog has some great articles.
- ❖ **<https://ronwinterconsulting.com/>** **Ron Winter** has published many articles on P6 and has a wealth of knowledge on the ins and outs of P6.
- ❖ **<https://docs.oracle.com/en/>** The Oracle Technology web site which has the documentation for Primavera P6 software.
- ❖ **<https://projectcontrolsonline.com/>** The Project Controls Online.com web site has many P6 blogs.
- ❖ **<https://www.planacademy.com/>** The Plan Academy, an online training company, produces and delivers online, on-demand training on Project Controls. It also has several good blogs.

If you know of any other website with useful information, please let me know and I will add them to my next publication.

30 INDEX

- % Complete Type, 227
- Access Mode, 287
- Activity
 - % Complete, 148
 - Assigning Calendars, 74
 - Auto Compute Actuals, 168, 169
 - Boxes - Formatting, 95
 - Calendar, 222
 - Code Color, 236
 - Codes, 234
 - Codes Definition form, 234, 235
 - Codes form, 234
 - Copy, 73
 - Critical Path, 110, 113
 - Details form, 99
 - Discussion, 285
 - Dissolving, 91
 - Duration, 194
 - In-Progress, 147
 - Leveling Priority, 215
 - Network, 94, 95
 - Network Options, 95
 - Network Window, 95
 - Notebook, 99
 - Percent Complete, 54, 149
 - percent complete based on activity steps, 226, 228
 - Recording, 76
 - Sorting, 76
 - toolbar, 89
 - Type, 183, 227
 - Usage Profile, 201
 - Usage Spreadsheet, 199
 - Window, 225
- Actual
 - Costs and Quantities, 222
 - Dates, 137
 - Duration, 147, 222
 - Finish, 52, 125, 146
 - Start, 52, 125, 146
- Add
 - New Activity Defaults, 70
 - New Filter, 107
 - Resources, 165
- Added By, 48
- Added Date, 48
- Additional Activities View, 85
- Admin Preferences, 17
- Admin Users, 171
- Advanced Schedule Options, 285
- All Projects use their own data dates, 155, 261
- All Roles Required, 190
- Always show full menus, 46
- ANP File Type, 96, 274
- Anticipated Dates
 - Project, 52
- Application Log File, 40
- Application Startup Window, 40
- Apply Actuals, 34, 231
- Apply selected data date to all open projects, 155, 261
- As Late As Possible Constraint, 97
- Assign
 - Activity Codes form, 237
 - Calendars to Activities, 74
 - Constraints, 97
 - Resource form, 191
 - Resources, 196
 - Resources By Roles form, 189
 - Roles form, 188, 190
- Assigned by, 48
- Assigned Date, 48
- Assignment Codes, 243
- Assignment Staffing, 43, 181
- At Completion Duration, 147
- Attachments Inserting, 84
- Audit Trail Columns, 47
- Auto Compute Actuals, 168, 232
- Automatically level resources when scheduling, 213
- Backward Resource Driven Critical Path, 110
- Bar form, 156
- Bar Label, 78
- Bar Necking, 80
- Baseline, 142, 146
- Bars, 156
 - Comparing to Progress, 156
- Batch Reports, 34
- Bucket Planned Resources, 203
- Bucket Planning, 203
- Calculate Costs from Units, 169
- Calculate float based on finish date of, 140, 263
- Calculate start-to-start lag from, 137
- Calculating Multiple Paths, 256
- Calculation form, 43
- Calculations tab, 180, 182, 193
- Calendar, 167
 - Activity, 222
 - Assigning, 74
 - Database Default, 61
 - For Scheduling Relationship Lag, 141
 - Global, 62
 - Inherit Holidays and Exceptions from a Global Calendar, 62
 - Resource, 223
 - Resource Dependent, 63
- Change the user password, 41
- Check In, 285

- Check Out, 285
- Check Schedule Report, 160
- Circular Relationship, 89
- Claim Digger, 24, 116, 122
- Closing Down, 48
- Code Separator, 18
- Codes
 - Activity, 234
 - Project, 31
 - Resource, 241
 - tab, 234
- Comments - Relationships, 93
- Commit Changes, 253
- Comparing Progress With Baseline, 156
- Compute Total Float as, 141
- Consent Notice, 25, 45
- Consider assignments in other projects with priority equal/higher than, 213
- Constraints, 97
- Convert another project to a new baseline of the current project, 263
- Copy Activity, 73
- Copy Activity Options form, 73
- Copying and Pasting into Excel, 209
- Cost Account, 55, 72, 242
- Cost Accounts form, 242
- Cost and Units Budget Values, 221
- Cost Spread, 22, 173
- Cost units linked, 169
- CPP File Type, 272
- Create Activity Codes, 235
- Creating Users, 35
- Currency, 27, 39, 166, 251
- Current Data Date, 150, 155
- Curtain, 84
- Curves Resource, 218
- Data Date, 52, 222, 260
- Data Date formatting, 146
- Database Default Calendar, 61, 62
- Date Formatting, 37
- Date Picker, 38, 97
- Decrease Maximum Multiple Critical Path Counts, 115
- Default
 - Calendar, 251
 - Currency, 27
 - Duration, 19
 - New Activities, 70
 - Project, 58, 132, 254, 258
 - Project Schedule Options, 258
 - Resource Rates, 178
 - Units/Time, 167
 - WBS Node Separator, 67
- Define critical activities as, 137
- Delete Element(s), 67
- Delete Key, 105
- Details form, 148
- Details Status form, 182
- Disable Auto-Reorganization, 105
- Discussion, 285
- Discussion tab, 285
- Display Actuals using Financial Period data, 29
- Display the Role Limits based, 42
- Dissolving Activities, 91
- Document Security, 22
- Drive Activity Dates, 179
- Drive activity dates by default, 56, 178
- Duration
 - % Complete, 128, 148
 - Actual, 147, 222
 - At Completion, 147
 - In-Progress Activity, 147
 - Original, 147
 - Remaining, 147
 - Type, 53, 70, 186
- Duration Format, 36
- Early
 - Finish, 124
 - Start, 124
- Earned Value Calculation, 20
- Edit
 - Relationship form, 87
- Edit Resource Usage Spreadsheet, 203
- Effective Date, 170, 172
- Elapsed Duration, 64
- Email, 39
- Enable Group and Sort, 111
- Enable Project Checker, 293
- Engineering and Construction, 24
- Enterprise Group and Sort, 104
- Enterprise Portfolio Project Management, 16
- EPPM, 16
- ERP File Type, 274
- Exception Site List, 26
- Exchange Rate, 27
- Exclusive, 257, 287
- Expected Finish, 98
- Expenses, 195
- Expenses Window, 195
- Exporting Filters, 109
- External Dates, 98, 133, 280
- External Early Start, 98, 133
- External Late Finish, 98, 133
- F10, 253
- F5, 252
- File Types
 - ANP, 96, 274
 - ERP, 274
 - IPMDAR, 272
 - MPP, 273
 - MPX, 273
 - PCF, 247, 274
 - PLF, 274
 - XER, 271
 - XLS, 274
 - XML, 271

Fill Down, 76

Filter

Add New, 107

Default, 106

Global, 106

User Defined, 106

User Project, 106

WBS, 108

Filters form, 107

Financial Period Calendars, 28, 291

Financial Periods, 28, 41

Finish

Milestone, 184

Variance, 156

First day of week, 18

Fixed Duration & Units, 53, 70, 187

Fixed Duration & Units/Time, 53, 70, 187

Fixed Units, 53, 70, 187

Fixed Units/Time, 53, 70, 187

Float Path, 285

Float Path Order, 112

Float Paths, 112

Forecast dates, 42, 269

Form

Activity Codes, 234

Activity Codes Definition, 234, 235

Activity Details, 99

Assign Activity Codes, 237

Assign Resource, 191

Assign Resources By Roles, 189

Assign Roles, 190

Bars, 156

Calculations, 43

Copy Activity Options, 73

Cost Accounts, 242

Details, 148, 150

Details Status, 182

Filter By, 190

Filters, 107

Group and Sort, 100

Level Resources, 213

Project Details, 70, 72

Resource Codes, 241

Role Codes, 245

Schedule, 155

Select Code, 237

Sort, 104

Trace Logic Options, 96

User Password, 41

User Preferences, 59, 197

Format

Activity Boxes, 95

Columns, 82

Row Height, 83

Forward Activity Critical Path, 113

Free Float Bar, 81

Freeze Units per Time Period, 217

Gantt Chart Legend, 119

Ghost Relationships, 263, 264, 265, 266

Global

Access tab, 255

Calendar, 62, 167

Change, 246

Security Profile, 30

Government, Aerospace, and Defense, 24

Group and Sort, 100

Enterprise, 104

Group and Sort form, 100

Group By, 102

Hide if empty, 103

Highlight, 106

High-Technology, 24

Histogram Bars Exact Values, 205

Hours per Time Period, 19

Ignore relationships to and from other projects, 133

Importing Activity Codes with Excel, 238

Inactive Resources, 41

Increase Maximum Multiple Critical Path Counts, 114

Indent, 102

Industry, 23

Inherit Holidays and Exceptions from a Global Calendar, 62

Inserting Attachments, 84

Interval for time-distributed resource calculations:, 42

IPMDAR File Type, 272

Job Service, 34, 267

Ladder scheduling, 92

Language, 47

Late Finish, 125

Late Start, 125

Lean Tasks, 283

Level of Effort, 183

Level resources during scheduling, 135

Level Resources form, 213

Level resources only within activity Total Float, 214

Leveling, 212

Leveling priorities - resources, 215

Limits, 217

Line Numbers, 84

Linear Spread, 174

Link Actual to date and Actual This Period Units and Cost, 228

Link actual to date and actual this period units and costs, 28

Link Budget and At Completion for not started activities, 147, 177

Link Budget and At Completion for started activities is unchecked, 126

Load Financial Period data, 41

LOE, 183

Longest Path, 58, 132, 138

Make open-ended activities critical, 58, 133

Mandatory Constraints, 99

Material Resources, 27, 166

Merge Element(s), 67

- Modified By, 48
- Modified Date, 48
- MPP File Type, 273
- MPX File Type, 273
- Multiple critical path, 132, 133
- Must Finish By date, 51, 214
- Negative Float, 288
- New Activity Defaults, 70
- New Project Wizard, 49
- Node Separator, 67
- Notebook Activity, 99
- Notebook Topics, 26
- Notes tab, 171
- Online Help, 22
- Open Ends, 287
- Organizational Breakdown Structure, 30
- Original
 - Duration, 147
 - Duration, Resource, 179
 - Lag, Resource, 179
- Outlining, 234
- Overtime, 167
- Owner, 184
- Owner Activity Attribute, 243
- Parameter/Value for Global Changes, 250
- Past Period Actuals, 290
- PCF File Type, 247, 274
- Percent Complete
 - Activity % Complete, 54, 149
 - Physical % Complete, 54, 149
 - Type, 54, 72
 - Units % Complete, 54, 149
- Updating, 231
- Personal Calendar, 167
- Personal Identifiable Information, 45
- Personal Information, 25
- PERT, 94
- Physical % Complete, 148
- PII - Personal Identifiable Information, 45
- Planned
 - Dates, 126
 - Finish, 126
 - Start, 51, 126
- PLF File Type, 274
- Portfolio Analysis, 42
- Portfolios, 47
- PPM, 16
- Predecessor Details, 92
- Preserve scheduled early and late dates, 214
- Preserve the Units, Duration, and Units/Time for existing assignments, 43, 181
- Primary Role, 163
- Primavera Change File PCF, 247
- Printing, 116
 - Page Setup, 118
 - Print Preview, 118
 - Section Content, 119
- Priority - Activity Leveling, 215
- Professional Project Management, 16
- Proficiency, 163, 171
- Progress
 - Line, 157
 - Override, 135, 136
 - Spotlight, 152
- Project
 - Architect, 21
 - Bar Charts, 268
 - Calendar, 55
 - Codes, 31
 - Details form, 70, 72
 - Finish Date, 52
 - Gantt/Profiles, 268
 - ID, 49
 - Must Finish By Date, 50
 - Phase, 240
 - Security Profile, 30
 - Tables, 268
 - Toolbar, 195
 - Web Site Publisher, 116
- Project Checker, 293
- Publish to a Web Site, 122
- Qualitative Check, 160
- Range Copy, 203, 209
- Range Paste, 203, 209
- Rate Type, 22, 178
- Rates for Roles, 163
- Read Only, 251, 257, 287
- Recalculate Actual Units and Cost when duration % complete changes., 228
- Recalculate assignment costs after leveling, 214
- Recalculate Cost Assignment, 172
- Recalculate resource costs after scheduling, 135
- Recalculate the Units, Duration, and Units/Time for existing assignments based on the activity Duration Type, 43, 181
- Recording Activities, 76
- Reflection project, 286
- Refresh Data, 252
- Relationship Colors, 87
- Relationship Comments, 93
- Remaining
 - Duration, 147, 148
 - Early Finish, 130
 - Early Start, 130
 - Start, 148
- Renumbering Activity IDs, 73
- Reporting, 116
- Reports Publish to a Web Site, 122

Resource

- Adding, 165
- Analyses Layout, 268
- Analysis, 41
- Assigning, 192, 196
- Assignments, 181
- Assignments Window, 202, 208
- Auto Compute Actuals, 168
- Calendar, 167, 223
- Codes, 165, 241
- Codes form, 241
- Cost, 176
- Curves, 218
- Default Rates, 178
- Dependent, 183
- Dependent Calendar, 63
- Labor, 175
- Lag, 195
- Leveling, 211, 212
- Limit, 217
- Nonlabor, 175
- Original Duration, 179
- Original Lag, 179
- Proficiency, 171
- Quantity, 176
- Rate Type, 178
- Removing, 192
- Shifts, 170
- Types, 166
- Updating, 231
- Usage Spreadsheet, 202
- Resources Window, 164
- Responsibilities, 163
- Restoring Baselines, 264
- Resume, 154
- Retain Lag, 91
- Retained Logic, 135, 136
- Role
 - Codes, 245
 - ID, 163
 - Name, 163
- Roles tab, 171
- Row Height Formatting, 83
- Save a copy of the current project as a new baseline, 263, 264
- Schedule automatically when a change affects dates, 135
- Schedule Comparison, 24, 116, 122
- Schedule form, 155
- Schedule Options, 131, 258
- Schedule Updating, 150
- SDK, 276
- Section Content - Printing, 119
- Select Code form, 237
- Select Subject Area, 248
- Send Project, 275
- Sequencing Logic, 211
- Set Language, 47
- Shared, 257, 258, 287

Shifts, 170**Show**

- full menus after a short delay, 46
- Grand Totals, 101
- Group Totals, 100
- Name/Description, 103
- Summaries Only, 101
- Title, Show ID/Code, 103
- Shrink vertical grouping bands, 102
- Software Developers Kit, 276
- Sort Arrow, 86
- Sort Banding Alphabetically, 103
- Sort form, 104
- Sorting Activities, 76
- Specify the intervals to summarize and store resource spreads, 21
- Spell Check, 76
- Stacked Histogram, 206
- Staffed Remaining Units, 161
- Staffed Roles, 190
- Stand Alone, 16
- Start
 - Milestone, 184
 - Variance, 156
- Startup Filters, 44
- Status, 146
- Status Date, 52
- Status of User Acceptance, 25
- Status tab, 150
- Steps, 225
- Store Period Performance, 28, 228, 290
- Stored Images, 119
- Successor Details, 92
- Summarizing Projects, 32
- Suspend and Resume, 75, 154
- Tab
 - Calculations, 180, 182, 193
 - Codes, 234
 - Discussion, 285
 - Notes, 171
 - Roles, 171
 - Status, 150
 - Timesheets, 171
- Task Dependent, 183
- Terminology, 24
- Text Boxes, 84
- Time Periods, 19
- Time Units, 36
- Time-Distributed Data, 42
- Timescale Finish, 120
- Timescale Start, 120
- Timescaled Logic Diagram, 122, 236
- Timesheets, 134, 171, 228
- Timesheets tab, 171
- To Level, 102
- Toolbar
 - Activity, 89
 - Project, 195
 - Tools, 152
 - Top Layout, 94

- Tools toolbar, 152
- Top Layout toolbar, 94
- Total Float Calculation, 263
- Total Float less than or equal to, 137
- Trace Logic, 96
 - Options form, 96
- Tracking Layout, 267
- Tracking Window, 42, 267
- TSLD, 122
- Type
 - Duration, 53, 70
- UN/CEFACT XML, 272
- Undo, 76
- Unit Spread, 174
- Units % Complete, 148
- Units Display, 29
- Units of Measurement, 27
- Unstaffed
 - Remaining Units, 161
 - Roles Required:, 190
 - Roles with Required Proficiency, 190
- Update
 - Activity, 150
 - Progress, 128, 152, 153
 - Schedules, 150
- Updating a Complete activity, 151
- Updating a Resourced Schedule, 223
- Updating an activity that has not started, 151
- Updating an In-progress activity, 151
- Updating Expenses, 232
- Updating the Schedule, 227
- Use Expected Finish Dates, 134
- Use scheduling options from, 57, 58, 132, 259
- User
 - Baselines, 47
 - Defined Fields, 238
 - Password form, 41
 - Preferences, 35, 36
 - Preferences form, 59, 197
 - User Preferences Personal Information, 25
 - Users form, 255
 - Users may See and Set Activity Start and Finish Times in the Date Picker box, 38
- Utilities, Oil, and Gas, 24
- Visualizer, 116, 122, 236, 274
- VLF File Type, 274
- WBS
 - Categories, 68
 - Category, 240
 - Filters, 108
 - Node Separator, 56, 67
 - Summary Activity, 185
- Web
 - Access Server, 21
 - Client, 16
 - Site, 122
 - Site Publisher, 116
- When scheduling progressed activities use, 135
- Window
 - Activity Network, 95
 - Application Startup, 40
 - Resources, 164
 - Tracking, 42
 - Windows Client, 16
 - Wizards, 39, 40
 - XER File Type, 271
 - XLS File Type, 274
 - XML File Type, 271
 - Zero Free Float, 97