



Oracle Primavera P6 PPM Professional Version 21 Milestone Reduced Relationship Types



1 Introduction

Oracle Primavera changed the number of relationships available to Milestones with the release of Version 21.

This paper explains:

- The changes to Milestone Relationship Types,
- The consequences,
- What happens with older imported projects and
- The workaround to create a proper schedule.

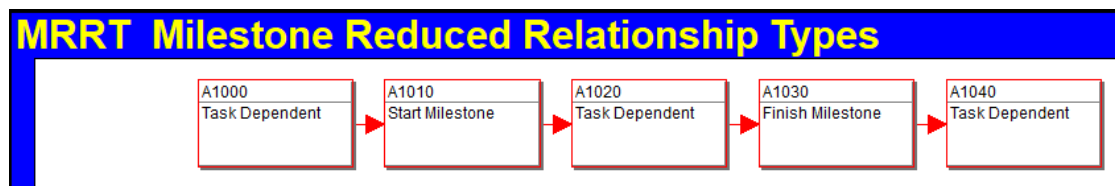
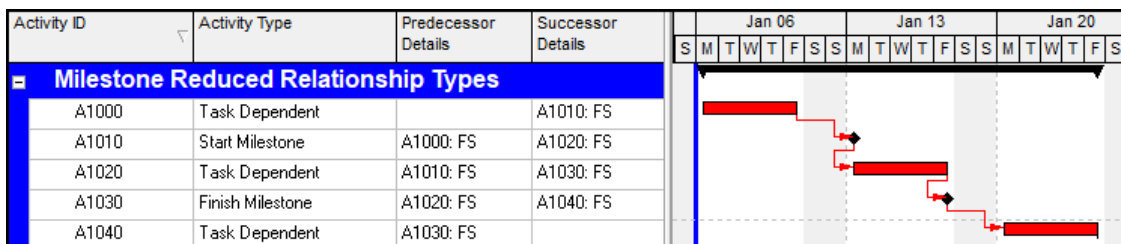
2 Changes to Milestone Relationship Types

P6 Version 20 and earlier supports more relationship types than P6 Version 21.

| | Start Milestone Predecessors | Start Milestone Successors | Finish Milestone Predecessors | Finish Milestone Successors |
|-------------------------|------------------------------|----------------------------|-------------------------------|-----------------------------|
| P6 Version 20 & earlier | FS and SS | FS, SF and SS | FF, FS and SF | FF and FS |
| P6 Version 21 & 22 | FS and SS | SF and SS | FF and SF | FF and FS |

Thus, in Version 21 Chain Linking does not result in all the predecessors and successors being a FS relationship and some people would say that this is no longer a critical path program:

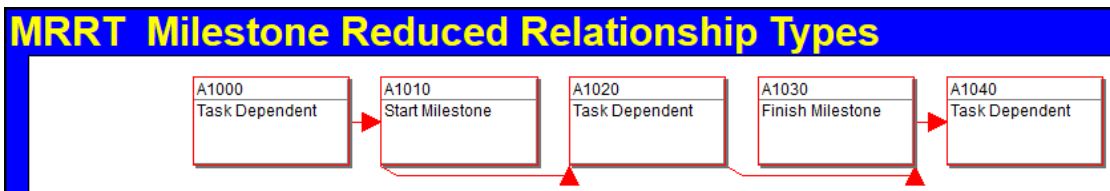
- P6 Version 20 Chain Linking





- P6 Version 21 Chain Linking

| Activity ID | Activity Type | Predecessor Details | Successor Details | Jan 06 | | | | | | | Jan 13 | | | | | | | Jan 20 | | | | | | | | |
|---|------------------|---------------------|-------------------|--------|---|---|---|---|---|---|--------|---|---|---|---|---|---|--------|---|---|---|---|---|---|---|---|
| | | | | S | M | T | W | T | F | S | S | S | M | T | W | T | F | S | S | S | M | T | W | T | F | S |
| Milestone Reduced Relationship Types | | | | | | | | | | | | | | | | | | | | | | | | | | |
| A1000 | Task Dependent | | A1010: FS | | | | | | | | | | | | | | | | | | | | | | | |
| A1010 | Start Milestone | A1000: FS | A1020: SS | | | | | | | | | | | | | | | | | | | | | | | |
| A1020 | Task Dependent | A1010: SS | A1030: FF | | | | | | | | | | | | | | | | | | | | | | | |
| A1030 | Finish Milestone | A1020: FF | A1040: FS | | | | | | | | | | | | | | | | | | | | | | | |
| A1040 | Task Dependent | A1030: FS | | | | | | | | | | | | | | | | | | | | | | | | |



3 Consequences

There are a couple of consequences:

- Some people including myself would consider that P6 Version 21 and later are not creating a Critical Path schedule as it no longer simple to create a schedule with all relationships as Finish to Start.
- Some software packages that perform a **Quantitative Check** on schedules will now give errors and these software packages may have to be reviewed.

4 What Happens to Imported Projects

Projects imported into P6 Version 21 from earlier versions bring in and acknowledge the old relationship types, but these Start Milestone FS and Finish Milestone FF cannot be set in Version21.

5 The Workaround to Create a Proper Schedule

Should you wish your Milestones to be linked with FS relationships, in the traditional way, then:

- Add the Milestones as tasks maybe with a zero duration so dates calculate correctly,
- Add the relationships and
- Then change the task to a Milestone.

Paul E Harris
Director Eastwood Harris Pty Ltd
8 February 2023



EASTWOODHARRIS

CREATE AND UPDATE AN UNRESOURCED PROJECT USING ELECSOFT (ASTA) POWERPROJECT VERSION 16

DESCRIPTION OF COURSE – The course objectives are to teach participants how to create projects without resources, for matting, printing, creating a baseline and updating an un-resourced project. Successful completion of all the course worksheets will confirm that the objectives have been met.

- Day 1 – Create an Unresourced Project
 - Introduction to Asta Powerproject
 - Navigation and Setting Defaults
 - Creating and Editing Elements
 - Creating and Editing Tasks
 - Summary Tasks
 - Linking Tasks to create a Critical Path Schedule
 - Resource
 - Constraints
- Day 2 – Formatting, Reports and Updating an Unresourced Project
 - Other Task Types
 - Custom Elements
 - Filters
 - Grouping and Sorting Tasks
 - Printing and Reports
 - Summary
 - Updating an Unresourced Project
 - User-Defined Fields and WBS

www.eh.com.au
 P.O. Box 4032, Doncaster Heights 3109 Australia
 Telephone +61 3 924 1118 (0)4

PLANNING AND CONTROL USING MICROSOFT® PROJECT 365 and 2021
 Including Microsoft Project 2013, 2016 and 2019

This book is aimed at showing project management professionals how to use the software in a project environment. It is designed for users of earlier versions to upgrade their skills and for new users to learn how to use the software. It starts with the basics required to create a schedule, then setting a baseline and updating a schedule. It then covers resource planning and some of the more advanced features.

Microsoft® Project 365 and 2021 is a newer update of Microsoft® Project 2019 and therefore the book covers versions 2013, 2016, 2019 and 2021. This book is aimed at showing project management professionals how to use the software in a project environment.

PAUL E. HARRIS

EASTWOOD HARRIS *Practical and readable solutions to real world problems*

99 TRICKS & TRAPS

FOR MICROSOFT PROJECT 2013, 2016 & 2019

THE CASUAL USER'S SURVIVAL GUIDE!

For users who understand the basics and want a brief text to demonstrate the less intuitive functions.

PAUL E. HARRIS

PLANNING AND CONTROL USING MICROSOFT PROJECT 365
 Including Microsoft Project 2013, 2016 & 2019

This book is aimed at showing project management professionals how to use the software in a project environment. It is designed for users of earlier versions to upgrade their skills and for new users to learn how to use the software. It starts with the basics required to create a schedule, then setting a baseline and updating a schedule. It then covers resource planning and some of the more advanced features.

Microsoft® Project 365 is a subscription version of Microsoft® Project 2019 Professional and therefore the book covers versions 2013, 2016 and 2021. This book is similar to other books written by the author but has been subject to Microsoft® Project 365.

PAUL E. HARRIS

PLANNING & CONTROL USING ORACLE® PRIMAVERA® P6
VERSION 8 TO 21 PPM PROFESSIONAL

A user guide and training manual written for Project Management Professionals who wish to learn how to plan and control projects in an established Primavera Enterprise environment with or without Resources and Roles.

It's a book to accompany the author's Primavera® P6 Service Pack 20 Book. It is a User Manual for users of Primavera® P6 Professional for Windows. The book has been written to help you get the most out of the software in a project environment.

PAUL E. HARRIS

EASTWOOD HARRIS *Practical and readable solutions to real world problems*

99 TRICKS & TRAPS

FOR ORACLE PRIMAVERA P6 PPM PROFESSIONAL

THE CASUAL USER'S SURVIVAL GUIDE!

For users who understand the basics of P6 and want a brief text to demonstrate the less intuitive functions.

PAUL E. HARRIS