



LADDER SCHEDULING WITH MICROSOFT PROJECT

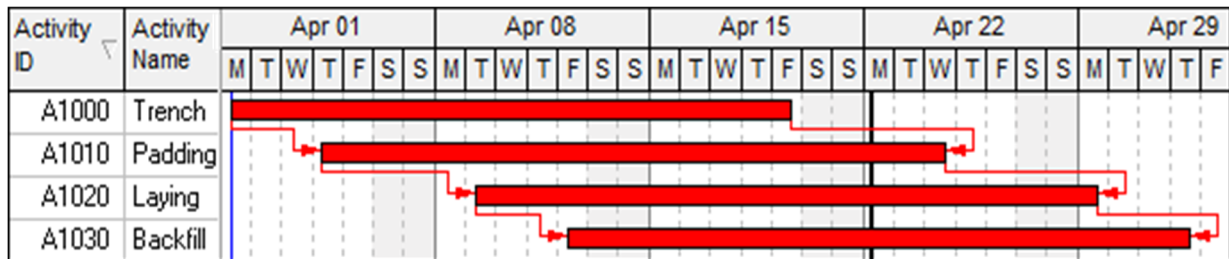
1 Format Timescale

Ladder scheduling is where series of tasks may take place in parallel with a short lag in their start dates. Large negative lags are normally unacceptable and Ladder Scheduling is used to link a set of tasks that have substantial overlap, such as pipe laying operations, tunnel and railway construction.

Ladder Scheduling is normally achieved in products like P6 and Powerproject by linking two tasks with both a Start-to-Start plus a Lag and a Finish-to-Finish plus a Lag relationship.

2 Ladder Scheduling with Oracle Primavera P6

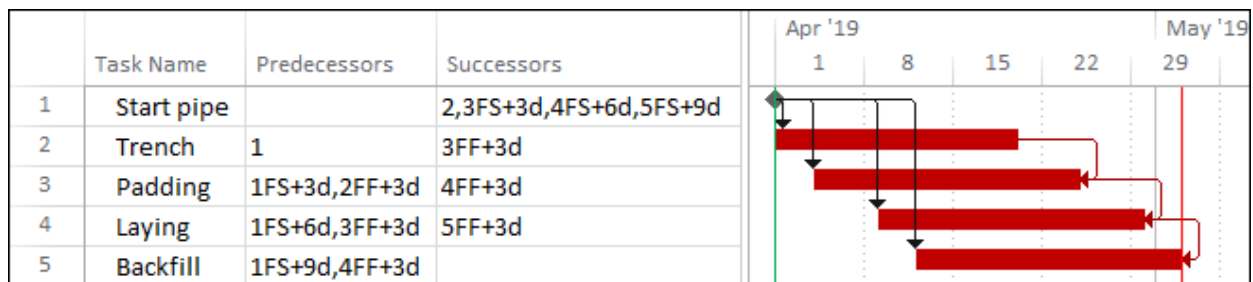
Most products allow multiple relationships between two tasks, as per the P6 example below, where the tasks are linked using two relationships, a SS+3d and a FF+3d:



3 Ladder Scheduling with Microsoft Project

Microsoft Project does not allow two relationships between tasks. Ladder Scheduling may be achieved by:

- ❖ Commencing a chain with a Start Milestone,
- ❖ Connect the Start Milestone to each task with a Start to Start plus the appropriate lag and
- ❖ Connect each task to their successor with a Finish to Finish relationship plus the appropriate lag:





4 Footnote

To see more explanations like this then buy Paul Harris' Microsoft Project book by which is available in paperback, spiral, Kobo, Kindle and iTunes from:

<https://www.eh.com.au/MSP2019.html>

These books are intended to be used:

- As a self-teach book and a two-day training course handout.
- Instructor PowerPoint slide shows are available for purchase and free pdf versions are available to educational organisations.

Eastwood Harris Pty Ltd,

Planning and Scheduling books and training material:

- Microsoft Project,
- Oracle Primavera P6 and
- Elecosoft (Asta) Powerproject

<https://www.eh.com.au>