



SCHEDULING WITH SHIFTS IN PRIMAVERA P6

by Paul E Harris

The Primavera P6 Shift function requires resources to be assigned and is used in conjunction with leveling function.

It is the author's opinion that shifts are better modeled using calendars and a separate LOE activity for the second and subsequent shifts modeled.

In a two-shift situation the night shift task are made into a LOE task and linked to the day shift task, the picture below shows a day and night shift example:

Activity ID	Activity Name	Activity Type	Original Duration	Calendar	Apr 11						
					Sun	Mon	Tue	Wed	Thr	Fri	Sat
Shifts					5d						
A1000	Night Shift	Task Dependent	5d	7x12 Day Shift	[Gantt chart showing a red bar for Day Shift and a green bar for Night Shift]						
A1010	Day Shift	Level of Effort	4d	7x12 Night Shift							

A three-shift situation looks like this:

Activity ID	Activity Name	Activity Type	Original Duration	Calendar	Apr 11						
					Sun	Mon	Tue	Wed	Thr	Fri	Sat
Shifts					5d						
A1020	Day Shift	Task Dependent	5d	7x8 Day Shift	[Gantt chart showing three bars: red (Day), green (Afternoon), and blue (Night)]						
A1030	Afternoon Shift	Level of Effort	4d	7x8 Night Shift							
A1040	Night Shift	Level of Effort	4d	7x8 Morning Shift							

If you require the end of the work to be after a specific shift that is not the same as the one required to start the work, to be then you need to add an extra milestone:

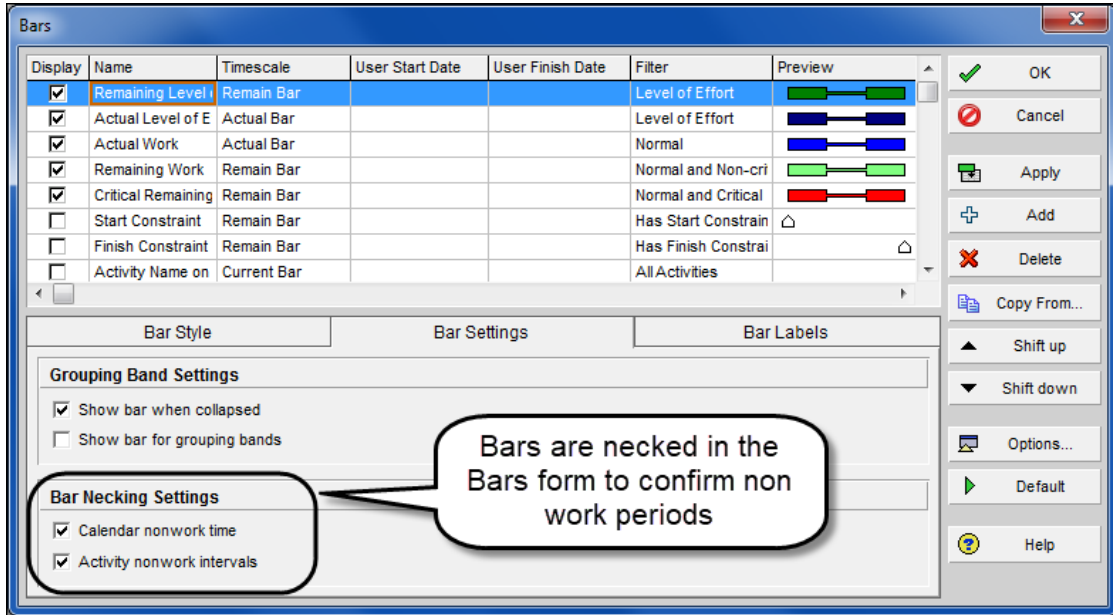
Activity ID	Activity Name	Activity Type	Original Duration	Calendar	Apr 11						
					Sun	Mon	Tue	Wed	Thr	Fri	Sat
Shifts					5d						
A1090	Day Shift	Task Dependent	5d	7x8 Day Shift	[Gantt chart showing Day Shift bar ending with a red arrowhead]						
A1100	Afternoon Shift	Level of Effort	5d	7x8 Night Shift							
A1110	Night Shift	Level of Effort	4d	7x8 Morning Shift							
A1120	New Activity	Start Milestone	0d	7x8 Morning Shift							

Then link through the Tasks or Milestones to develop your schedule:

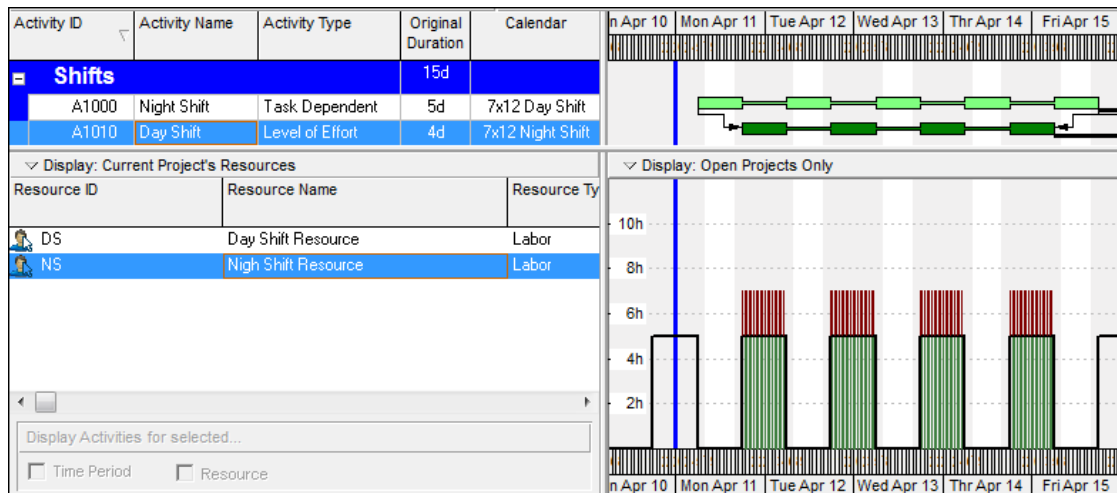
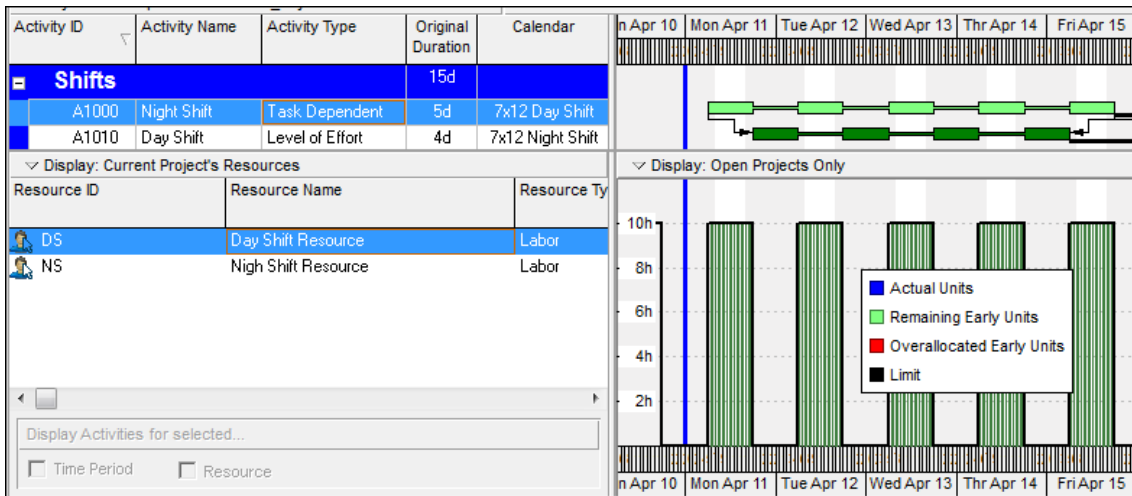
Activity ID	Activity Name	Activity Type	Original Duration	Calendar	Apr 11, Apr 18, Apr 25																							
					M	T	W	T	Fri	S	S	M	T	W	T	F	S	S	M	T	W	T	Fri	S	S			
Shifts					15d																							
A1000	Night Shift	Task Dependent	5d	7x12 Day Shift	[Gantt chart showing a sequence of tasks and milestones across three weeks]																							
A1010	Day Shift	Level of Effort	4d	7x12 Night Shift																								
A1020	Day Shift	Task Dependent	5d	7x8 Day Shift																								
A1030	Afternoon Shift	Level of Effort	4d	7x8 Night Shift																								
A1040	Night Shift	Level of Effort	4d	7x8 Morning Shift																								
A1050	Day Shift	Task Dependent	5d	7x8 Day Shift																								
A1060	Afternoon Shift	Level of Effort	4d	7x8 Night Shift																								
A1070	Night Shift	Level of Effort	4d	7x8 Morning Shift																								
A1090	Day Shift	Task Dependent	5d	7x8 Day Shift																								
A1100	Afternoon Shift	Level of Effort	5d	7x8 Night Shift																								
A1110	Night Shift	Level of Effort	4d	7x8 Morning Shift																								
A1120	Milestone	Start Milestone	0d	7x8 Morning Shift																								



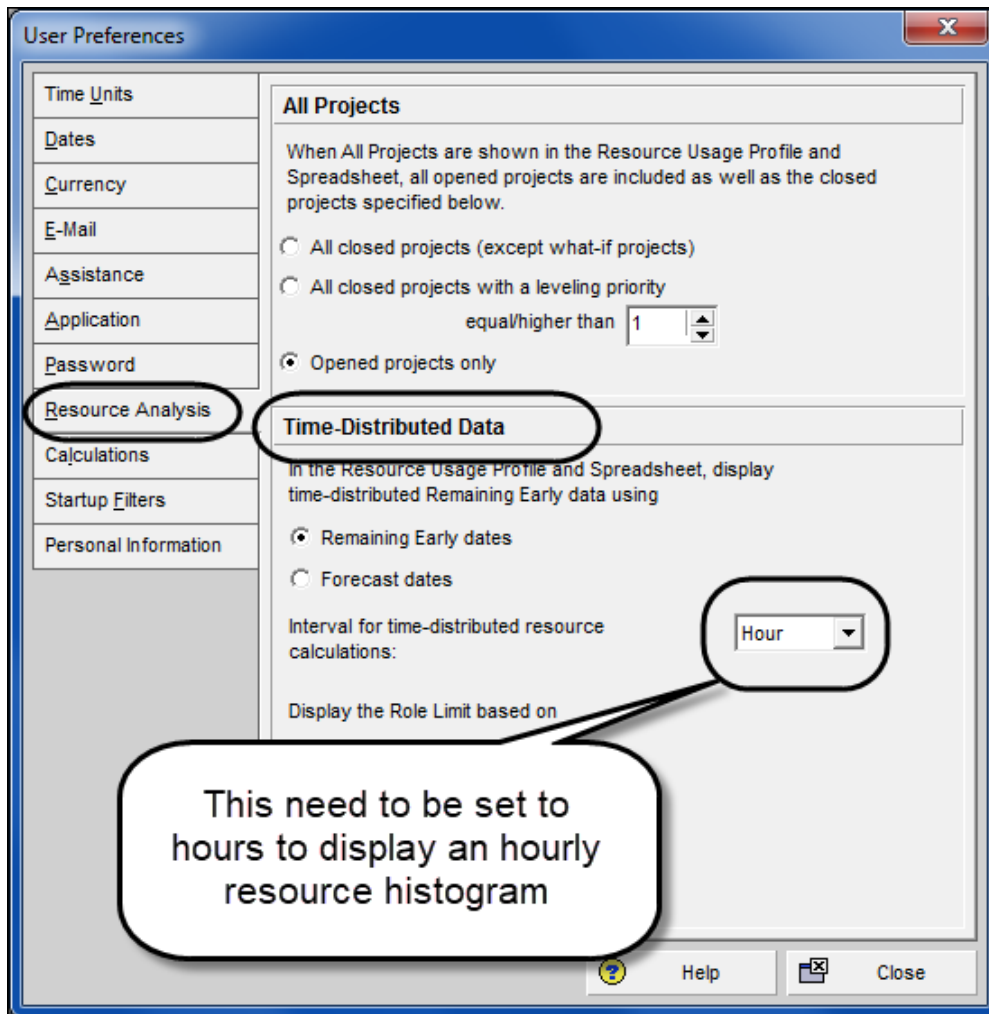
The bars are in the pictures above have been necked in the Bars form to confirm non work periods:



Resources may be created and assigned at a different vale for each shift allowing flexibility for the scheduler to model different scenarios.



To show hourly histograms make sure your User Preferences are set correctly:



To see more explanations like this then please consider purchasing books by Paul Harris written on:

- Microsoft Project,
- Oracle Primavera P6 and
- Elecosoft Powerproject

These are available in many formats including paperback, spiral, Kobo, Kindle and iTunes.

These books are intended to be used:

- As a self-teach book and user guide, or training course handouts.
- Instructor PowerPoint slide shows are available and free pdf versions are supplied to educational organisations on request.

More information and links to sellers at this web site:

<https://www.eh.com.au>

Paul E Harris

Director Eastwood Harris Pty Ltd